



PARKWAYSCHOOLS

HIGHER EXPECTATIONS. BRIGHTER FUTURES.

Financial Statements

Date: April 2019

PARKWAY SCHOOL DISTRICT
MONTHLY FINANCIAL REPORT
TABLE OF CONTENT

<u>DOCUMENT</u>	<u>PAGE</u>
EXECUTIVE SUMMARY.	1 - 2
GRAPHS - REVENUE, EXPENDITURE, CASH, AND FUND BALANCE .	3 - 5
RECAPITULATION OF FUNDS	6
ACCRUAL BALANCE SHEET.	7
BREAKOUT OF CASH AND INVESTMENTS	8
MODIFIED ACCRUAL REVENUE SCHEDULE	9
EXPENDITURE SUMMARY BY OBJECT	10
FOOD SERVICE INCOME AND EXPENSE	11
EXPENDITURE SUMMARY BY BUILDING	12
EXPENDITURE SUMMARY BY PROGRAM	13 - 15
GLOSSARY	16 - 17
PURCHASING REPORTS	18 - 36



TO: Board of Education

DATE: June 12, 2019

FROM: Patricia Bedborough, CPA

RE: Executive Summary April 2019

Abstract

The April financial reports are attached. The revenues received are ahead of the collection from last year. We have not received our taxes paid under protest amount and should receive this in June. The good news that our taxes paid under protest for 2018 decreased to \$28,032,642 from last year's \$44,861,283. With this is some bad news as well. Our amount that has been settled from past protests has increased by 30% from prior year. This will most likely result in a lower collection rate than budgeted. Following a meeting with the county, we were also told that many current taxpayers are delinquent in their payments. We will keep you posted as we know more about this situation. We have collected \$2.4 million greater than budgeted for Financial Institution Tax. This will offset the impending lower revenue from our tax payers. One additional line item of note is the increase of interest income. We project that we will receive about \$1 million in operating funds this year. The expenditures are slightly above the operating expenses from last year; however, we are in line with the budget spending. A portion to this is from payroll expenses include a payout of approximately \$400,000 for retirees from last year that selected a payout. All financials have the revised budget included.

Future Issues

The following issues are still pending and could affect district finances in the future:

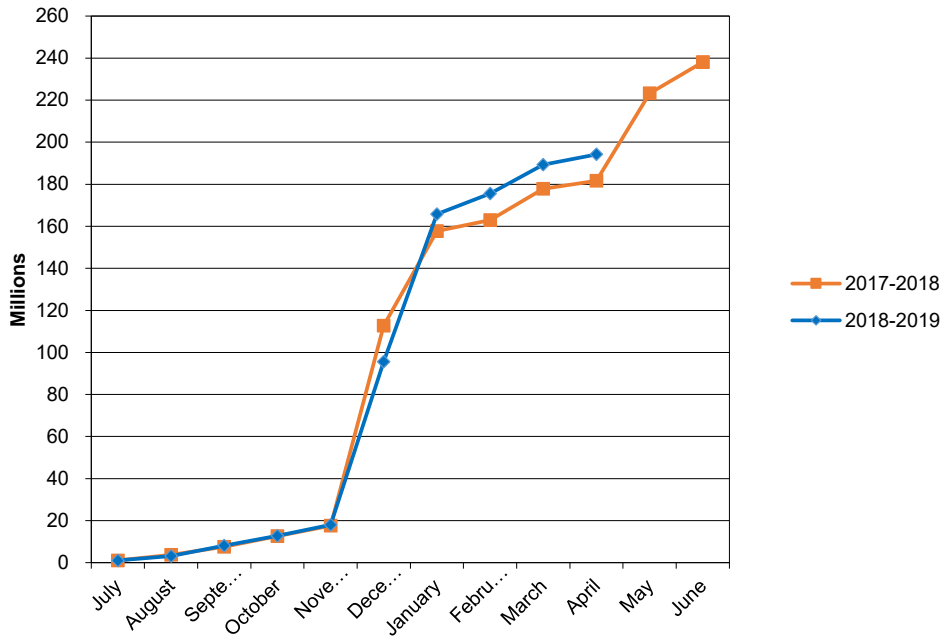
1. Health Insurance Costs – Higher health costs are a large portion of our benefit expenses. We have bid our pharmacy benefit manager through Business Health Coalition and with this, we will have substantial savings over market trends for our pharmacy beginning with October 1, 2018. We have opened our near site clinic for our employees and staff effective August. When looking at costs for 2019, we will have a zero dollar increase in premiums. We finished the 2018 year at a surplus. We experienced lower high cost cases and savings from our increased pharmacy rebates from our re-negotiated contract with Express Scripts.
2. Commercial Property Assessments Appeals – As you are aware this has been a struggle over the last several years. We have seen our collection rate fluctuate due to these settlements. We worked with the

state auditor's office last year and have calculated an additional \$3.7 million in recoupment. We continue to work with St. Louis County. Our settlements through January have increased from \$100,000,000 in total from last year in AV to \$130,000,000 for July – January. This will most likely result in a collection rate lower than our budgeted 97%.

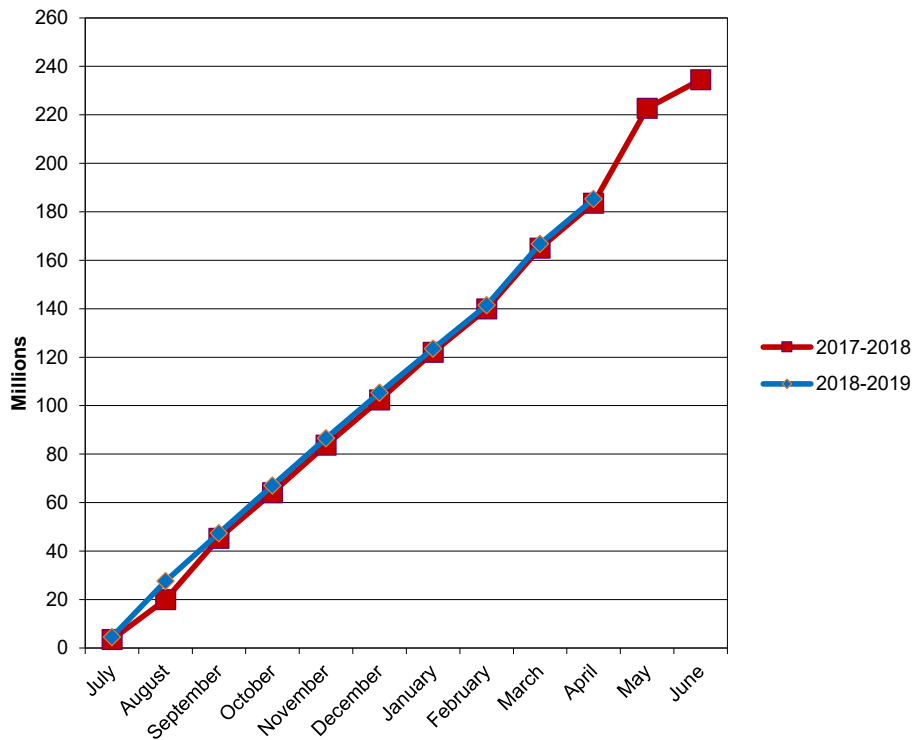
3. New Construction Assessments - In September we received our final amounts from St. Louis County. We had another strong year with new construction.
4. Interest Income –Interest rates are continuing to increase. As we make our investment of funds, we will be able to project an interest income this year. Our interest from our banking account is holding strong.
5. State Revenue –DESE will be adjusting the State Adequacy Target for the formula revenues. The State Adequacy Target is still well below the amount determined by the original formula legislation.
6. Unaccredited Schools – Parkway is continuing provide educational services for students from both Riverview Gardens and the Normandy School Districts that have been enrolled in Parkway. The tuition to be charged to the Normandy School District and to Riverview Garden's School District is lower than Parkway's regular tuition rates and is the rate charged to VICC. The students are able to remain in Parkway until they are at a natural transition and then will return to their home district.
7. Spot Market Purchases – For information purposes, fiscal year-to-date purchases under the spot market procurement policy are as follows:

Fuel	\$	430,937.64
Paper	\$	187,577.20
Trash Liner	\$	52,491.00
Produce:	\$	89,295.00

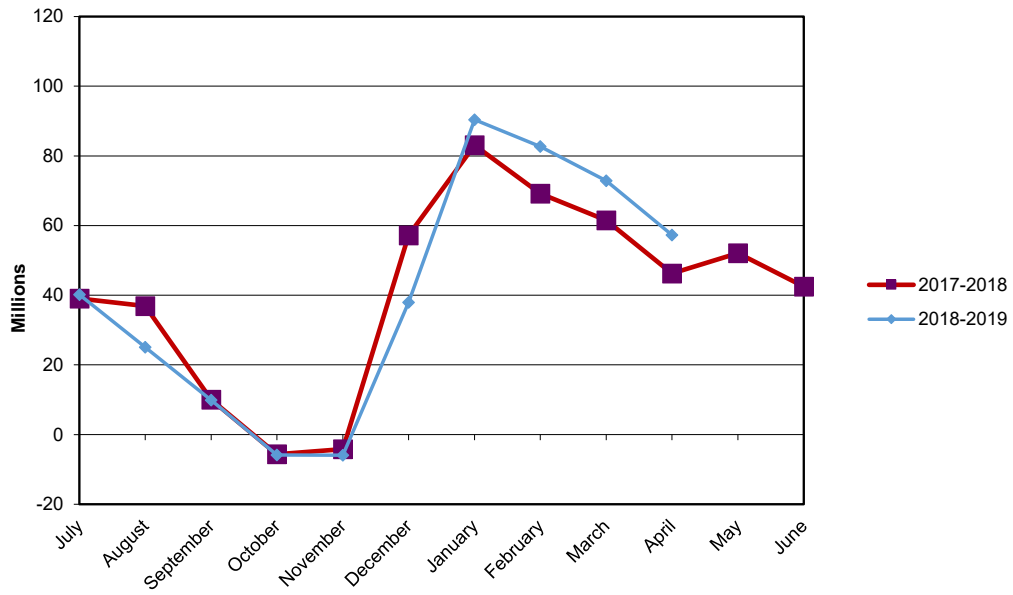
PARKWAY SCHOOL DISTRICT ACTUAL OPERATING REVENUE

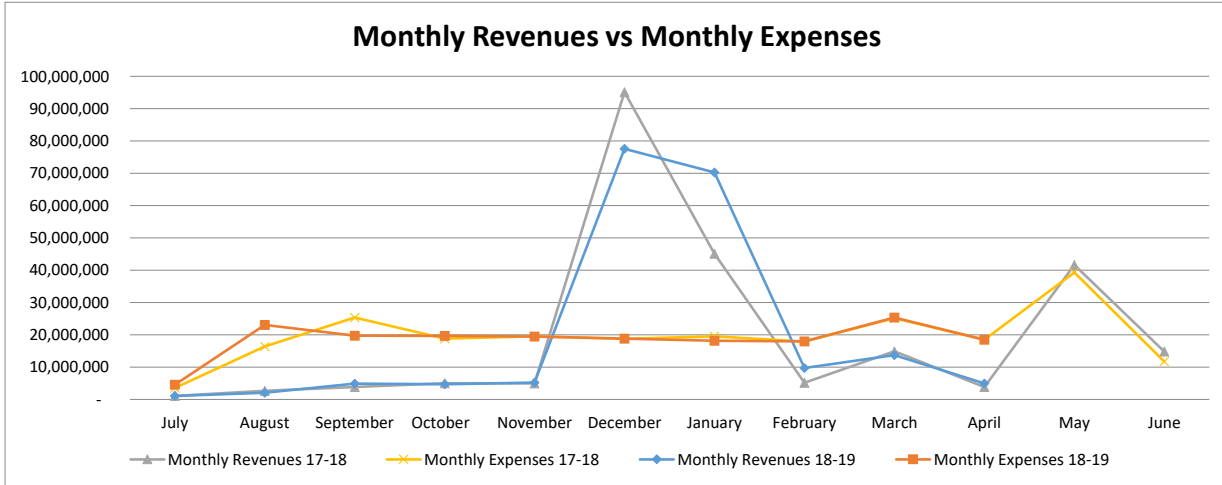
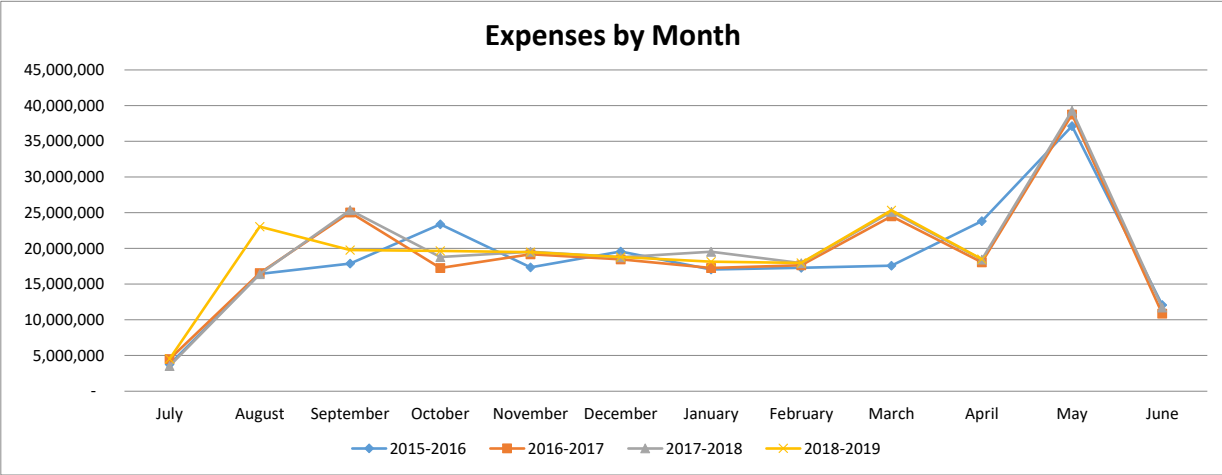
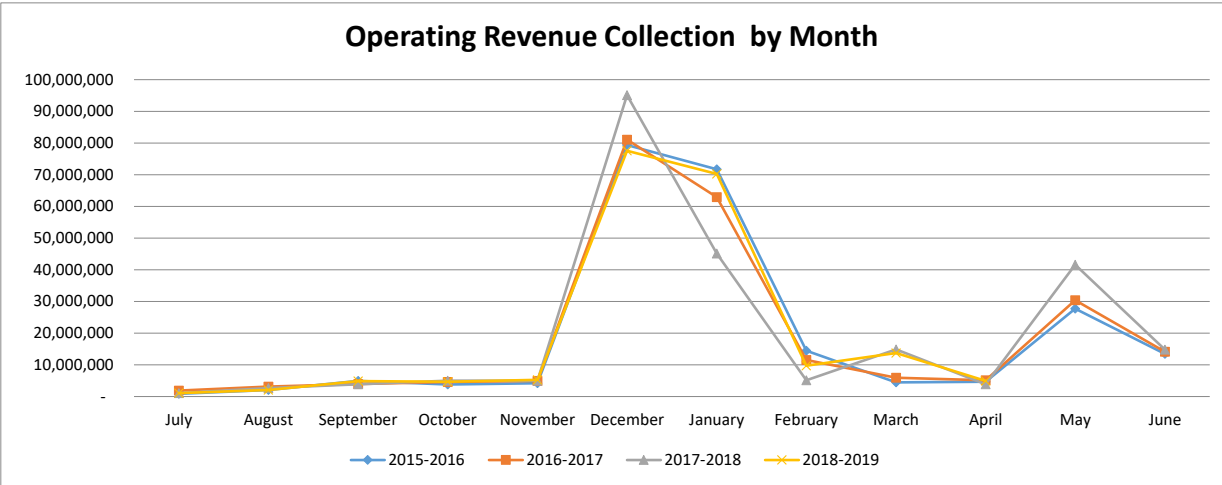


PARKWAY SCHOOL DISTRICT ACTUAL OPERATING EXPENDITURES



PARKWAY SCHOOL DISTRICT OPERATING FUND CASH AND INVESTMENTS





**Parkway School District
Recapitulation of Funds
Budget 2018-2019 With Restatement of Opening Balances**

FY2019 Full Year Projection

	Operating	Debt Service	Capital Projects	2014 Bond Issue	2018 Bond Issue	All Funds
Beginning Fund Balance	46,492,486	36,717,985	2,253,613	17,496,421	-	102,960,505
Revenues	240,149,043	23,299,881	7,758,824	15,000	59,877,000	331,099,748
Expenses	238,692,339	26,488,648	3,882,730	28,121,421	-	297,185,138
Ending Fund Balance	47,949,190	33,529,218	6,129,707	(10,610,000)	59,877,000	136,875,115

ACTUAL FY19 THROUGH 4/30/19

	Operating	Debt Service	Capital Projects	2014 Bond Issue	2018 Bond Issue	All Funds
Beginning Fund Balance	46,492,486	36,717,985	2,253,613	17,496,421	-	102,960,505
Revenues	194,184,384	19,750,785	6,313,385	157,179	59,876,057	280,281,790
Expenses	185,276,700	23,112,317	2,033,154	15,254,898	2,858,851	228,535,920
Ending Fund Balance	55,400,170	33,356,453	6,533,844	2,398,702	57,017,206	154,706,375

ACTUAL FY18 THROUGH 4/30/18

	Operating	Debt Service	Capital Projects	2014 Bond Issue	2018 Bond Issue	All Funds
Beginning Fund Balance	44,415,182	13,767,360	652,502	38,079,930	-	96,914,974
Revenues	181,698,254	48,567,546	2,516,533	129,997	-	232,912,330
Expenses	183,510,542	59,338,985	2,522,646	13,978,681	-	259,350,854
Ending Fund Balance	42,602,894	2,995,921	646,389	24,231,246	-	70,476,450

**PARKWAY SCHOOL DISTRICT
ACCRUAL BALANCE SHEET
April 30, 2019**

	TOTAL- ALL FUNDS 4/30/2019	TOTAL- ALL FUNDS 4/30/2018
ASSETS		
Cash & Investments	\$ 173,132,036	85,206,468
Accounts Receivable	\$ 204,545	250,548
Inventories	\$ 761,248	666,607
Prepaid Expenses	\$ 1,685,262	1,291,955
Land	\$ 3,457,837	3,457,837
Land Improvements	\$ 17,072,007	18,034,643
Buildings/Improvements	\$ 163,361,982	151,631,814
Construction in Progress	\$ 50,522,194	52,539,700
Equipment	\$ 12,674,728	13,815,316
Total Assets	\$ 422,871,839	326,894,888
LIABILITIES & FUND BALANCE		
Accounts Payable - Operating Funds	\$ 1,941,358	1,146,754
Accounts Payable - Bond Issue Funds	\$ 104,794	34,171
Accounts Payable - Medical Fund	\$ 165,886	-
Wages, Payroll Taxes, and Benefits Payable	\$ 3,204,225	4,508,689
Bonds Payable	\$ 190,760,000	201,620,000
Interest Payable	\$ 2,578,845	1,924,587
Liability for Compensated Absences	\$ 1,502,251	1,432,869
Liability for Early Retirement	\$ 902,168	1,932,641
Total Liabilities	\$ 201,159,527	212,599,712
Bond Issue Fund Balance	\$ 59,415,908	24,231,246
Debt Service Fund Balance	\$ 33,356,453	2,995,921
Capital Projects Fund Balance	\$ 6,533,844	646,389
Equity in Fixed Assets less Long Term Liabilities	\$ 51,345,484	32,569,213
Medical Fund Balance	\$ 15,660,453	11,249,513
Operating Fund Balance	\$ 55,400,170	42,602,894
Total Fund Balance	\$ 221,712,312	114,295,176
TOTAL LIABILITIES & FUND BALANCE	\$ 422,871,839	326,894,888

BREAKOUT OF CASH & INVESTMENT BALANCE

	<u>4/30/2019</u>	<u>4/30/2018</u>
MEDICAL FUND CASH	15,826,339	11,249,513
DEBT SERVICE FUND CASH	33,356,278	2,974,610
DEBT SERVICE FUND INVESTMENTS	175	7,775
BOND ISSUE FUND CASH	59,303,309	5,986,730
BOND ISSUE FUND INVESTMENTS	7,805	18,726,893
CAPITAL PROJECTS FUND CASH	7,354,689	-
OPERATING FUND CASH	57,283,441	46,260,947
TOTAL	173,132,036	85,206,468

RESTRICTED RESERVE

	<u>4/30/2019</u>	<u>4/30/2018</u>
FOOD SERVICE	362,630	548,518
MEDICAL BENEFITS	15,660,453	11,249,513
STUDENT ACTIVITY	3,336,001	3,288,230
TOTAL	19,359,084	15,086,261

PARKWAY SCHOOL DISTRICT
MODIFIED ACCRUAL REVENUE SCHEDULE
TOTAL ALL FUNDS

	YEAR TO DATE 4-30-2019				YEAR TO DATE 4-30-2018			
	BUDGETED REVENUE	REVENUE REALIZED	% REALIZED	BALANCE TO BE REALIZED	REVENUE** 6/30/2018	REVENUE REALIZED	% REALIZED	BALANCE TO BE REALIZED
LOCAL								
Property Taxes	169,622,577	143,393,841	84.54%	26,228,736	168,199,861	134,201,868	79.79%	33,997,993
Sales Tax	15,819,210	10,448,691	66.05%	5,370,519	15,440,981	9,930,667	64.31%	5,510,314
M&M Surtax	4,733,790	3,039,298	64.20%	1,694,492	4,857,510	2,504,299	51.56%	2,353,211
Food Service	4,070,811	3,724,157	91.48%	346,654	4,209,014	3,764,234	89.43%	444,780
Other Local	10,662,039	9,913,954	92.98%	748,085	9,245,144	7,953,187	86.03%	1,291,957
VICC-VST Revenue	7,431,350	2,556,528	34.40%	4,874,822	7,890,932	2,517,711	31.91%	5,373,221
TOTAL LOCAL	212,339,777	173,076,469	81.51%	39,263,308	209,843,442	160,871,966	76.66%	48,971,476
INTEREST	894,906	1,000,218	111.77%	(105,312)	798,119	488,519	61.21%	309,600
COUNTY	3,316,254	3,316,254	100.00%	-	3,299,694	3,080,447	93.36%	219,247
STATE								
Basic Formula	2,413,326	2,026,285	83.96%	387,041	2,702,394	2,286,433	84.61%	415,961
Classroom Trust	6,568,938	4,806,193	73.17%	1,762,745	6,406,422	4,850,310	75.71%	1,556,112
Transportation	1,230,001	1,025,420	83.37%	204,581	1,168,043	972,901	83.29%	195,142
Other State	1,451,413	2,003,195	138.02%	(551,782)	1,998,855	1,671,410	83.62%	327,445
TOTAL STATE	11,663,678	9,861,093	84.55%	1,802,585	12,275,714	9,781,054	79.68%	2,494,660
FEDERAL								
Federal Food Service	2,112,600	1,650,802	78.14%	461,798	2,145,449	1,694,423	78.98%	451,026
Other Federal Entitlements	3,287,735	1,216,600	37.00%	2,071,135	2,991,905	1,238,106	41.38%	1,753,799
TOTAL FEDERAL	5,400,335	2,867,402	53.10%	2,532,933	5,137,354	2,932,529	57.08%	2,204,825
OTHER FINANCING SOURCES								
Transportation Reimbursement	2,948,874	1,085,450	36.81%	1,863,424	2,884,503	1,331,037	46.14%	1,553,466
Tuition From Other Districts	50,000	69,214	138.43%	(19,214)	206,142	161,819	78.50%	44,323
Sale Of Property	35,219	18,483	52.48%	16,736	35,219	28,913	82.09%	6,306
TOTAL OTHER FINANCING SOURCES	3,034,093	1,173,147	38.67%	1,860,946	3,125,864	1,521,769	48.68%	1,604,095
SUB-TOTAL OPERATING REVENUE	236,649,043	191,294,583	80.83%	45,354,460	234,480,187	178,676,284	76.20%	55,803,903
STUDENT ACTIVITIES	3,500,000	2,889,801	82.57%	610,199	3,623,837	3,021,970	83.39%	601,867
TOTAL OPERATING REVENUE	240,149,043	194,184,384	80.86%	45,964,659	238,104,024	181,698,254	76.31%	56,405,770
NON-OPERATING REVENUES								
2019 Bond Issue	59,877,000	59,876,057	0.00%	943	-	-	#DIV/0!	-
Bond Issue Interest/Premium	15,000	157,179	1047.86%	(142,179)	302,657	129,997	42.95%	172,660
Refunding Bond Issuance	-	-	0.00%	-	27,405,000	-	0.00%	27,405,000
Refunding Bond Issue Premium	-	-	0.00%	-	2,276,429	-	0.00%	2,276,429
Debt Service Property Taxes	22,178,803	18,749,295	84.54%	3,429,508	22,185,774	17,701,396	79.79%	4,484,378
Debt Service Interest/Premium	505,192	385,604	76.33%	119,588	729,102	2,873,004	394.05%	(2,143,902)
Debt Service County Revenue	615,886	615,886	100.00%	-	642,409	27,993,146	4357.53%	(27,350,737)
Cap. Projects Property Taxes	6,775,850	5,728,101	84.54%	1,047,749	2,263,855	1,806,265	0.00%	457,590
Capital Projects Other	561,179	280,385	49.96%	19,615	412,470	84,589	0.00%	327,881
Capital Projects Grants	121,561	-	0.00%	-	290,055	290,055	0.00%	-
Marketing Agreement	300,000	304,583	101.53%	-	378,750	335,583	88.60%	43,167
Capital Interest/Premium	234	316	135.04%	(82)	236	41	100.00%	195
TOTAL ALL REVENUE SOURCES	331,099,748	280,281,790	84.65%	50,817,958	294,990,760	232,912,330	78.96%	62,078,430

EXPENDITURE SUMMARY BY OBJECT
TOTAL ALL FUNDS
April 30, 2019

	BUDGET	ACTUAL	%	ACTUAL**	ACTUAL	%	CHANGE FROM PRIOR YEAR	
	2018-2019	EXPENDITURES YTD 4/30/2019	EXPENDED 2018-2019	EXPENDITURES 06/30/2018	EXPENDITURES YTD 4/30/2018	EXPENDED 2017-2018	\$	%
SALARIES								
Certificated	100,457,728	76,023,701	75.68%	98,362,989	74,697,003	75.94%	1,326,698	-0.26%
Classified	38,863,174	30,693,138	78.98%	37,714,509	30,437,491	80.70%	255,647	-1.73%
Administrative	11,987,413	10,256,051	85.56%	11,740,688	9,944,666	84.70%	311,385	0.85%
TOTAL SALARIES	151,308,315	116,972,890	77.31%	147,818,186	115,079,160	77.85%	1,893,730	-0.54%
BENEFITS								
Retirement, Social Security and Medicare	25,037,375	19,721,772	78.77%	25,027,067	19,447,318	77.71%	274,454	1.06%
Medical, Dental and Life Insurance	28,999,615	21,888,419	75.48%	27,759,590	21,839,207	78.67%	49,212	-3.19%
TOTAL BENEFITS	54,036,990	41,610,191	77.00%	52,786,657	41,286,525	78.21%	323,666	-1.21%
PURCHASED SERVICES								
Substitute Services	2,948,473	2,408,953	81.70%	3,108,104	2,716,515	87.40%	(307,562)	-5.70%
Tuition	148,000	72,019	48.66%	137,925	127,570	92.49%	(55,551)	-43.83%
Professional Services	2,848,330	1,771,891	62.21%	1,876,035	1,847,782	98.49%	(75,891)	-36.29%
Audit	34,000	33,800	99.41%	29,000	29,000	100.00%	4,800	-0.59%
Technical Services	92,400	102,841	111.30%	156,988	102,383	65.22%	458	46.08%
Legal Services	200,000	149,727	74.86%	171,663	132,477	77.17%	17,250	-2.31%
Property Services	2,184,431	1,796,255	82.23%	2,181,468	1,838,236	84.27%	(41,981)	-2.04%
Travel & Contracted Trans.	2,313,554	1,183,946	51.17%	2,354,238	1,480,396	62.88%	(296,450)	-11.71%
Property Insurance	864,809	823,526	95.23%	830,850	780,247	93.91%	43,279	1.32%
Liability Insurance	847,639	837,432	98.80%	801,690	802,234	100.07%	35,198	-1.27%
Other Purchased Services	1,686,392	1,170,297	69.40%	1,664,595	1,021,372	61.36%	148,925	8.04%
TOTAL PURCHASED SERVICES	14,168,028	10,350,687	73.06%	13,312,556	10,878,212	81.71%	(527,525)	-8.66%
CONSUMABLES								
General Supplies	3,320,234	2,621,704	78.96%	3,542,213	2,941,915	83.05%	(320,211)	-4.09%
Instructional Supplies	8,320,158	5,681,816	68.29%	6,437,240	4,979,080	77.35%	702,736	-9.06%
Library Books	279,575	236,723	84.67%	272,414	219,646	80.63%	17,077	4.04%
Gasoline/Diesel	635,500	528,808	83.21%	435,692	354,213	81.30%	174,595	1.91%
Energy Services	4,072,900	2,753,254	67.60%	3,989,929	2,834,432	71.04%	(81,178)	-3.44%
Food Service Supplies	3,000,000	2,224,510	74.15%	2,462,106	2,499,590	101.52%	(275,080)	-27.37%
TOTAL CONSUMABLES	19,628,367	14,046,815	71.56%	17,139,594	13,828,876	80.68%	217,939	-9.12%
OPERATING LEASES	50,639	41,215	81.39%	37,823	37,823	100.00%	3,392	-18.61%
SUBTOTAL OPERATING EXPENSES	239,192,339	183,021,798	76.52%	231,094,816	181,110,596	78.37%	1,911,202	-1.85%
STUDENT ACTIVITIES	3,500,000	2,254,903	64.43%	3,431,904	2,399,944	69.93%	(145,041)	-5.50%
ANTICIPATED EXPENDITURE SAVINGS	(4,000,000)	-	0.00%	-	-	0.00%	-	0.00%
TOTAL OPERATING EXPENSES	238,692,339	185,276,701	77.62%	234,526,720	183,510,540	78.25%	1,766,161	-0.63%
CAPITAL OUTLAY - NON BOND EXPENSES								
Land Improvement	100,000	25,841	25.84%	439,404	365,580	83.20%	(339,739)	-57.36%
Building Alterations	130,000	-	0.00%	109,544	81,371	74.28%	(81,371)	-74.28%
General Equipment	641,478	135,214	21.08%	592,157	1,619,789	273.54%	(1,484,575)	-252.46%
Instructional Equipment	861,619	204,558	23.74%	303,333	92,656	30.55%	111,902	-6.80%
Technology Equipment	200,000	166,870	83.44%	209,280	65,140	31.13%	101,730	52.31%
Student Activity	100,000	129,324	129.32%	96,799	79,524	82.15%	47,177	47.17%
Vehicles	240,000	149,853	62.44%	5,080	5,080	100.00%	144,773	-37.56%
School Buses	1,278,159	1,010,196	79.04%	1,159,675	-	100.00%	1,010,196	-20.96%
TOTAL CAPITAL OUTLAY	3,551,256	1,821,856	51.30%	2,915,272	2,309,140	79.21%	(487,284)	-27.91%
2014 BOND ISSUE EXPENDITURES	17,511,421	15,254,898	87.11%	20,886,166	13,978,681	66.93%	1,276,217	20.19%
2018 BOND ISSUE EXPENDITURES	10,610,000	2,858,851	26.94%	-	-	0.00%	2,858,851	26.94%
CAPITAL FUND - BUS LEASES	331,474	211,298	63.74%	328,980	213,506	64.90%	(2,208)	-1.15%
DEBT SERVICE - GO BONDS	26,488,648	23,112,317	87.25%	30,288,090	59,338,985	195.92%	(36,226,668)	-108.66%
GRAND TOTAL EXPENSES	297,185,138	228,535,921	76.90%	288,945,228	259,350,853	89.76%	(30,814,932)	-12.86%

**FOOD SERVICE
STATEMENT OF INCOME AND EXPENSE
April 30, 2019**

		<u>BUDGET FY19</u>	<u>CURRENT MONTH</u>	<u>ACTUAL EXPENDITURES YTD 4/30/2019</u>	<u>% EXPENDED</u>	<u>PRIOR YEAR ACTUAL FY18</u>	<u>PRIOR YEAR TO DATE April 2018</u>	<u>PRIOR YEAR % EXPENDED</u>
RESERVE FOOD SERVICE SURPLUS	-78.2%		\$242,706	\$108,211		\$135,350	\$495,522	
INCOME								
LOCAL	754.2%	4,070,811	\$443,401	\$3,724,157	91.48%	\$4,209,014	\$435,989	10.36%
STATE	676.3%	38,039	\$2,894	\$21,259	55.89%	\$23,694	\$2,739	11.56%
FEDERAL	667.4%	2,112,600	\$259,813	\$1,907,101	90.27%	\$2,141,863	\$248,518	11.60%
TOTAL INCOME	722.5%	6,221,450	\$706,108	\$5,652,516	90.86%	\$6,374,571	\$687,245	10.78%
COST OF GOODS SOLD:								
Beginning Inventory	-38.5%		\$323,800	\$167,832		\$132,849	\$273,076	205.55%
Add: Purchases-Food	622.0%	3,000,000	\$241,500	\$2,224,510	74.15%	\$2,590,905	\$308,087	11.89%
Purchases-Other	706.3%	236,280	\$20,720	\$224,281	94.92%	\$186,290	\$27,816	14.93%
Goods Available	329.7%		\$586,020	\$2,616,623		\$2,910,044	\$608,979	20.93%
Less: Ending Inventory	7.1%		\$290,157	\$290,157		\$167,832	\$270,820	161.36%
TOTAL COST OF GOODS	588.0%	3,236,280	\$295,863	\$2,326,466	71.89%	\$2,742,212	\$338,159	12.33%
GROSS MARGIN	852.8%	\$2,985,170	\$410,245	\$3,326,050	111.42%	\$3,632,360	\$349,086	9.61%
OPERATION COSTS:								
Salaries	998.7%	2,144,495	\$185,086	\$1,996,254	93.09%	\$2,359,241	\$181,690	7.70%
Fringe Benefits	913.6%	1,227,870	\$101,996	\$1,014,625	82.63%	\$1,176,834	\$100,104	8.51%
Purchased Services	645.8%	91,716	\$14,728	\$75,673	82.51%	\$60,690	\$10,146	16.72%
Operating Supplies	2313.5%	68,955	\$1,921	\$72,566	105.24%	\$53,316	\$3,007	5.64%
Credit for Services	684.5%	(100,000)	(\$13,411)	(\$89,639)	89.64%	(\$128,799)	(\$11,426)	8.87%
Total Operating Costs	982.6%	3,433,036	\$290,320	\$3,069,478	89.41%	\$3,521,281	\$283,521	8.05%
INCOME (LOSS) FROM OPERATIONS	291.3%	(447,866)	\$119,924	\$256,572		\$111,078	\$65,565	59.03%
EQUIPMENT		200,000	\$0	\$2,153	1.08%	\$138,218	\$12,569	9.09%
RESERVE FOOD SERVICE SURPLUS	-33.9%		\$362,630	\$362,630		\$108,211	\$548,518	506.90%

**Parkway School District
Building Location Recap Report**

Fiscal Year 2019 Through Period 10 Run Date: 05-21-2019 @ 07:57:11

	Budget	Expended	Encumbrances	Unexpended
FERN RIDGE HIGH	16,400.00	17,154.89	1,277.05	-2,031.94
CENTRAL HIGH	364,381.00	254,132.72	17,301.47	92,946.81
NORTH HIGH	288,008.00	224,925.96	7,872.65	55,209.39
WEST HIGH	338,231.00	306,681.67	45,303.73	-13,754.40
SOUTH HIGH	478,348.00	310,950.62	32,503.23	134,894.15
SOUTHWEST MIDDLE	119,372.00	130,021.87	2,048.49	-12,698.36
CENTRAL MIDDLE	192,990.00	162,865.95	11,916.15	18,207.90
NORTHEAST MIDDLE	170,385.00	177,775.99	9,815.83	-17,206.82
SOUTH MIDDLE	134,712.00	110,535.23	-2,205.61	26,382.38
WEST MIDDLE	225,907.00	223,363.98	29,322.24	-26,779.22
BARRETS ELEM.	78,502.00	49,420.31	793.60	28,288.09
BELLERIVE ELEM.	68,316.00	47,310.21	868.64	20,137.15
CARMAN TRAILS ELEM.	83,652.00	52,145.51	9,532.95	21,973.54
CLAYMONT ELEM.	74,442.00	65,071.34	5,644.28	3,726.38
CRAIG ELEM.	90,326.00	81,148.71	9,438.75	-261.46
GREEN TRAILS ELEM.	69,845.00	51,017.87	9,072.46	9,754.67
HANNA WOODS ELEM.	74,485.00	67,713.16	1,055.31	5,716.53
HENRY ELEM.	106,539.00	55,997.30	10,997.21	39,544.49
HIGHCROFT ELEM.	62,387.00	19,183.20	28,505.45	14,698.35
MASON RIDGE ELEM.	83,275.00	65,741.63	2,122.14	15,411.23
MCKELVEY ELEM.	109,182.00	65,823.73	12,895.50	30,462.77
OAK BROOK ELEM.	97,298.00	74,159.70	573.02	22,565.28
PIERREMONT ELEM.	83,195.00	53,068.02	2,961.43	27,165.55
RIVER BEND ELEM.	76,023.00	65,690.64	871.51	9,460.85
ROSS ELEM.	57,357.00	57,554.28	192.77	-390.05
SORRENTO SPRINGS ELEM.	56,590.00	32,556.92	7,416.70	16,616.38
SHENANDOAH VALLEY ELEM.	95,971.00	72,075.74	2,233.82	21,661.44
WREN HOLLOW ELEM.	62,266.00	53,984.96	827.15	7,453.89
Grand Total for Funds 10-12	3,704,131.00	2,897,122.15	191,334.50	615,674.35
Grand Total for Fund 20	0.00	2,918.96	0.00	-2,918.96
Grand Total for Fund 30	0.00	0.00	0.00	0.00
Grand Total for Funds 40-41	54,254.00	48,031.00	69,823.42	-63,600.42
Grand Total All	3,758,385.00	2,948,072.11	261,157.92	549,154.97

**Parkway School District
Consolidated Budget - Programs Recap Report**

Fiscal Year 2019 Through Period 10 Run Date: 05-21-2019 @ 07:58:17

	Budget	Expended	Encumbrances	Unexpended
SPECIAL READING	17,871.00	13,135.75	625.19	4,110.06
COMM ARTS	202,510.00	133,600.33	5,334.16	63,575.51
MATHEMATICS	92,242.00	52,179.47	7,603.75	32,458.78
FINE ARTS	393,345.00	300,862.58	20,939.74	71,542.68
PHYSICAL EDUCATION	64,811.00	54,306.69	6,689.95	3,814.36
SCIENCE	130,491.00	80,528.56	12,195.45	37,766.99
SOCIAL STUDIES	108,715.00	78,660.66	6,674.38	23,379.96
INSTRUCTIONAL TECHNOLOGY	117,682.00	88,299.86	13,384.24	15,997.90
GUIDANCE	31,006.00	12,923.46	0.00	18,082.54
ART	147,208.00	127,730.23	6,345.25	13,132.52
BLDG ADMIN SERVICES	2,226,800.00	1,420,804.44	140,604.57	665,390.99
AUDIO VISUAL SERVICES	13,180.00	-612.34	-211.52	14,003.86
BUSINESS EDUCATION	48,677.00	23,996.13	0.00	24,680.87
MODERN CLASSICAL LANG	45,883.00	23,656.27	0.00	22,226.73
FAMILY AND CONSUMER SC	74,474.00	48,707.71	8,120.01	17,646.28
INDUSTRIAL ARTS	46,193.00	30,358.04	4,425.83	11,409.13
STUDENT BODY ACT	242,204.00	169,290.20	24,508.35	48,405.45
DRIVERS EDUCATION	920.00	201.68	0.00	718.32
COOP VOC ED	79,760.00	27,907.70	1,483.42	50,368.88
UNIFIED STUDIES	2,580.00	2,902.88	0.00	-322.88
SPEECH	28,911.00	17,733.03	0.00	11,177.97
LIBRARY SVCS	94,820.00	59,220.69	6,692.91	28,906.40
HEALTH ED	8,483.00	3,526.06	0.00	4,956.94
EEE CAMP	123,917.00	104,639.40	4,282.00	14,995.60
GIFTED EDUCATION	212,386.00	173,978.47	900.84	37,506.69
DRUG FREE SCHOOL	133,408.48	102,511.71	556.78	30,339.99
ADC	619,443.00	591,268.51	0.00	28,174.49
SUMMER SCHOOL	1,519,475.00	132,244.92	21,587.59	1,365,642.49
INSTRUCTIONAL STAFFING	134,616,254.86	102,533,401.42	0.00	32,082,853.44
BLDG LEVEL STAFFING	17,196,851.00	14,030,363.92	0.00	3,166,487.08
SPECIAL SERVICES	505,018.00	317,470.65	0.00	187,547.35
ESOL	15,778.00	12,398.31	68.75	3,310.94
ATHLETICS	1,009,781.00	842,739.85	176,503.73	-9,462.58
ADULT BASIC EDUCATION	1,684,775.00	1,231,833.78	27,801.81	425,139.41
SWIM CLUB	850,596.00	614,777.71	9,680.00	226,138.29
EARLY CHILDHOOD	1,714,276.00	1,423,187.77	2,682.67	288,405.56
PRESCHOOLS	2,138,430.00	1,854,996.40	846.92	282,586.68
PARK ROCK COMM ED	105,000.00	29,809.54	70,000.00	5,190.46

**Parkway School District
Consolidated Budget - Programs Recap Report**

Fiscal Year 2019 Through Period 10 Run Date: 05-21-2019 @ 07:58:17

	Budget	Expended	Encumbrances	Unexpended
STUDENT SERVICES	129,295.00	120,256.64	50,000.00	-40,961.64
PUPIL PERSONNEL	2,042,806.00	2,128,214.35	97,585.26	-182,993.61
HEALTH SERVICES	2,755,148.00	2,257,645.56	4,356.90	493,145.54
GUIDANCE AND COUNSELING	205,717.00	158,085.10	250.00	47,381.90
SEB SUPPORT	11,100.00	4,510.26	126.58	6,463.16
TEACH LEARN ACCOUNTABILITY	4,627,098.00	2,791,457.25	249,315.38	1,586,325.37
PROFESSIONAL LEARNING	1,349,713.00	755,965.35	5,535.13	588,212.52
READING DIAGNOSTICS	241,845.75	123,939.84	0.00	117,905.91
EVALUATION	267,638.00	213,928.33	506.60	53,203.07
INSTRUC TECH LIBRARY MEDIA	952,836.00	865,828.52	71,250.33	15,757.15
STUDENT ASSESSMENT	382,867.00	140,476.52	76,913.25	165,477.23
PROGRESS MONITORING	817,164.00	413,241.87	0.00	403,922.13
BOARD OF EDUCATION	217,455.00	195,123.40	0.00	22,331.60
SUPERINTENDENT	481,887.00	379,234.63	1,048.12	101,604.25
DISTRICT DUES	154,100.00	140,303.45	0.00	13,796.55
LEGAL SERVICES	175,000.00	149,727.33	35,722.31	-10,449.64
DEPUTY SUPERINTENDENT	347,512.00	246,469.14	4,552.40	96,490.46
ASST SUPER OF STUDENT SERVICES	324,513.00	242,426.71	0.00	82,086.29
CHIEF FINANCIAL OFFICER	312,444.00	258,802.66	1,345.15	52,296.19
COMMUNICATIONS	953,952.00	851,293.47	17,637.71	85,020.82
SAFETY SECURITY	1,368,648.00	1,076,488.36	176,569.86	115,589.78
SPECIAL PROJECTS	167,907.00	79,802.70	0.00	88,104.30
FINANCE	1,011,363.00	890,869.22	4,907.52	115,586.26
INTERNAL EQUIP FIN	456,360.00	318,892.82	133,774.10	3,693.08
RISK MGMT	2,261,532.00	2,089,252.10	32,668.95	139,610.95
FOOD SERVICES	6,872,016.00	5,520,421.97	571,684.72	779,909.31
PURCHASING	395,962.00	325,031.31	421.22	70,509.47
PRINT SHOP	28,336.00	-1,513.38	4,667.20	25,182.18
SCHOOL STORES	440,123.00	310,887.94	90,295.08	38,939.98
WAREHOUSE	1,228,140.00	775,990.84	2,463.27	449,685.89
MAILROOM	94,053.00	66,135.75	1,541.29	26,375.96
TECHNOLOGY	7,243,781.00	6,390,685.04	74,774.36	778,321.60
HUMAN RESOURCES	1,143,585.00	906,460.39	7,475.82	229,648.79
TRANSPORTATION	6,918,901.00	6,177,135.29	74,783.63	666,982.08
SSD TRANSPORTATION	2,782,606.00	1,843,528.72	0.00	939,077.28
STUDENTS IN TRANSITION	0.00	98,202.70	101,797.30	-200,000.00
FACILITY OPERATIONS	8,198,278.00	6,442,212.75	110,382.82	1,645,682.43
FACILITY MAINTENANCE	5,209,547.00	3,992,147.04	341,436.17	875,963.79

**Parkway School District
Consolidated Budget - Programs Recap Report**

Fiscal Year 2019 Through Period 10 Run Date: 05-21-2019 @ 07:58:17

	Budget	Expended	Encumbrances	Unexpended
GROUNDS MAINTENANCE	1,991,323.00	1,502,837.71	186,999.19	301,486.10
PLANNING	1,419,370.48	731,433.15	315,028.96	372,908.37
ENVIRONMENTAL SVCS	747,447.00	677,866.18	19,631.92	49,948.90
FACILITY MANAGEMENT	920,866.00	559,761.44	183,676.86	177,427.70
SUSTAINABILITY	5,325,222.00	3,560,838.22	425,442.51	1,338,941.27
REBATE PROJECTS	329,946.00	-280,438.75	304,462.00	305,922.75
2014 BOND	22,496,421.00	15,255,835.49	1,800,589.65	5,439,995.86
2018 BOND	3,016,930.00	2,858,850.99	21,049,245.68	-20,891,166.67
DEBT SERVICE	25,450,648.00	23,112,317.01	1,668.00	2,336,662.99
STATE GRANTS	372,071.50	162,858.38	0.00	209,213.12
FEDERAL GRANTS	2,513,148.00	1,441,394.29	43,589.91	1,028,163.80
LOCAL GRANTS	121,835.11	118,879.62	6,892.67	-3,937.18
Grand Total for Funds 10-12	85,152,564.59	66,479,420.18	3,392,930.27	15,280,214.14
Grand Total for Fund 20	154,200,715.59	116,597,284.50	0.00	37,603,431.09
Grand Total for Fund 30	25,450,648.00	23,112,317.01	1,668.00	2,336,662.99
Grand Total for Funds 40-41	26,119,754.00	17,159,665.43	2,819,498.60	-14,750,576.70
Grand Total All	293,940,612.18	226,207,538.11	27,263,342.55	40,469,731.52

• **GLOSSARY**

ACCOUNTS PAYABLE - Unpaid amounts currently owed to vendors for goods and services provided.

ACCOUNTS RECEIVABLE - Revenues earned but not yet received by the District.

AMOUNT PROVIDED FOR BOND PRINCIPAL - Amount available to meet current and future bond payments.

AMOUNT TO BE PROVIDED FOR PRINCIPAL AND INTEREST - The amount of funds needed to repay remaining bonded indebtedness. This is a “memo type” entry and does not represent an actual accumulation of cash.

BONDS AND INTEREST PAYABLE - CURRENT - Amount of bond principal and interest payable in future years.

CONSTRUCTION IN PROGRESS - Amounts expended to date on construction projects not completed. When completed, this account is reduced by the total cost of the completed projects.

ENCUMBRANCES - Obligations in the form of purchase orders, contracts, salary commitments, etc. for which a budgeted appropriation has been made.

EQUITY IN GENERAL FIXED ASSETS - Represents the appropriation of funds over a number of years to acquire land, buildings / improvements, and equipment. It is an offset to the respective asset accounts.

FUND BALANCE - The excess of assets over liabilities, which represent the “net worth” of a fund.

FUNDS - The four basic funds and their purposes are:

Capital Projects (Building) - Only capital equipment and building additions / alterations can be charged to this fund. Primary sources of revenue are property / delinquent taxes, building leases, investment income and sale of bonds.

Debt Service - Bond principal, interest and fees associated with the issue and redemption of bonds are the only expenses chargeable to this fund. Primary sources of revenue are property / delinquent taxes and investment income.

General (Incidental) - Expenses not specifically chargeable to other funds are charged to this fund. Primary sources of revenue are property / delinquent taxes, sales tax, investment income, minimum guarantee, VST, textbook, transportation and food service.

Special Revenue (Teachers) - Only salaries for certificated personnel and the cost medical / dental / vision / life insurance can be charged to this fund. Primary sources of revenue are property / delinquent taxes, investment income, state utility tax, minimum guarantee and VST.

INVENTORIES - Value of consumables purchased for future use.

PREPAID EXPENSES - Services paid for in advance of use (e.g. insurance).

RESERVE - Portion of the fund balance which is segregated for a future use and, therefore, not available for future appropriation.

RESERVE FOR BUDGETED ENCUMBRANCE - Funds budgeted and encumbered but not yet spent.

RESTRICTED RESERVE - Balances in the General Fund or Capital Projects Fund restricted as to the use (e.g. future medical / dental benefits) or unspent bond issue funds.

UNREALIZED REVENUES - Revenues budgeted but not yet realized.

UNSPENT BUDGETED FUNDS - Funds budgeted but not expended or encumbered.



FOR MONTH OF: APRIL - FY19

Attached is a list (alphabetical by vendor) of purchase orders and order for payments \$500 to \$15,000 and \$15,000 + which the administration has approved in accordance with Policy #DJEBP

Reports per DIC.BP

c: Patty Bedborough, Brian Whittle, Erik Lueders

ORDER FOR PAYMENT

\$500 - \$15,000

APRIL - FY19

VENDOR NAME	DOCUMENT	INVOICE	WARRANT	OBJECT	CHECK NO	AMOUNT
Amazon.com*MI91M5UXO	359998	359998		6411	0	\$ 1,084.04
AMTRAK TELEP06327070	360114	360114		6398	0	\$ 1,248.00
AMZN Mktp US*MI0R57K	360005	360005		6411	0	\$ 647.20
AWARD EMBLEM MFG CO	356869	406880	REG	6411	488635	\$ 690.56
BANDEMER MARKETING	360224	PSH LACROSSE	EARLY	6411	0	\$ 809.00
BAUGUS,MICHAEL	359076	041019 TVL	REG	6343	0	\$ 664.33
CALLIER'S CATERING	359466	359466		6411	0	\$ 752.40
CASUAL TEES	357903	52398	042519	6411	3741	\$ 667.23
CLEAN CARTON CO INC	359795	1103966-01	REG	6412	0	\$ 621.00
CPI-CRISIS PREVENTIO	357338	CUS0182597	041819	6319	3710	\$ 989.00
CRYSTAL SPRINGS QUAR	359967	359967		6411	0	\$ 593.00
CUSTOM SERVICE CRANE	358118	41591	REG	6411	489078	\$ 680.00
DEPT OF LABOR & IND	356833	ACCT #:05-87205-0-00	EARLY	6271	488803	\$ 633.10
E3 GORDON STOWE	356645	1227584	REG	6332	489083	\$ 656.00
EDUCATIONAL SERVICE	359969	359969		6319	0	\$ 679.00
EDUCATIONAL SERVICE	359971	359971		6319	0	\$ 679.00
EDUCATIONAL SERVICE	359972	359972		6319	0	\$ 679.00
EDUCATIONAL SERVICE	359970	359970		6319	0	\$ 1,358.00
EPIC SPORTS, INC	359433	359433		6411	0	\$ 800.00
ESLINGER, LORI	357509	SETTLEMENT 4.12.19	MANUAL	6317	488621	\$ 7,500.00
FOUR SEASONS DISTRIB	357328	59098	EARLY	6411	488815	\$ 673.29
FOUR SEASONS DISTRIB	359079	59250	EARLY	6411	0	\$ 839.60
GOPHER SPORT	360108	360108		6411	0	\$ 1,207.00
GRADUATION CAP GOWN	359310	359310		6411	0	\$ 658.51
HEARTLAND COCA-COLA	358929	16419200209	EARLY	6411	0	\$ 583.08
HEARTLAND COCA-COLA	359732	6093201065	EARLY	6411	0	\$ 954.34
HEAVY DUTY TOOLS INC	355550	1097438	REG	6411	488288	\$ 508.00
HERTZ EQUIPMENT RENT	355552	30629002-001	REG	6334	488292	\$ 526.10
HP INC	359615	6417600180	REG	6337	0	\$ 515.00
IN *TREAD 365 INC.	359468	359468		6411	0	\$ 624.00
IRBY-HAWKINSON SUSAN	356690	031619 TVL	REG	6343	489108	\$ 727.08
MATTHEW E KURTZ NURS	356726	12795	041819	6411	3720	\$ 536.00
MIDWEST ISOA	357564	SHOWCASEREFEREES	EARLY	6391	488840	\$ 975.00
MISSOURI CIVIL WAR	357738	2019-13A	EARLY	6398	488980	\$ 600.00
MISSOURI CIVIL WAR	357736	2019-13	EARLY	6398	488980	\$ 600.00
MISSOURI VOCATIONAL	356835	579838 RI	REG	6411	488716	\$ 864.22
NAUTICUS - ADMISSION	360132	360132		6398	0	\$ 811.80
NEW PIG CORPORATION	359489	22743363-00	REG	6411	0	\$ 617.53
NORDHORN, JOHANNA	356553	NORTH 3-9-19	REG	6391	488571	\$ 600.00
NOTTELMANN MUSIC CO	355955	570493	REG	6411	488731	\$ 610.00
PARENT/STUDENT RFND	357189	ART SCHOLARSHIP	EARLY	6398	488861	\$ 500.00
PARENT/STUDENT RFND	357362	REFUND STEP TRIPS	EARLY	6411	488868	\$ 500.00
PARENT/STUDENT RFND	358629	SCHOOL LUNCH-89	EARLY	5150	488993	\$ 550.00
PERSON, KAREN	355928	REIMB K PERSON 04032	REG	6312	488740	\$ 500.00

PURCHASE ORDERS

\$500 - \$15,000

APRIL FY 19

PO#	Vendor Name	PO Date	Order Amount	Balance	Status	1st GL Account
43190065	ADVANCED EXCERC	04/15/2019	\$ 1,570.00	\$ 1,570.00	8 - Printed	10111AWS-6411
50190159	ALL STAR DISTRI	04/26/2019	\$ 600.00	\$ 600.00	8 - Printed	1024100J-6411
58190246	ALLEGRA DESIGN	04/08/2019	\$ 7,990.00	\$ -	0 - Closed	11149365-6411-07200
83190152	AMAZON	04/24/2019	\$ 500.00	\$ 500.00	8 - Printed	10223390-6411
83190145	AMAZON	04/17/2019	\$ 2,000.00	\$ 2,000.00	8 - Printed	10223825-6411
74190018	AMAZON	04/17/2019	\$ 3,499.00	\$ 3,499.00	8 - Printed	10228167-6411-46540
63190342	AMAZON	04/22/2019	\$ 3,500.00	\$ 3,500.00	8 - Printed	10235320-6412
62190471	AMAZON	04/24/2019	\$ 5,697.81	\$ 5,697.81	8 - Printed	10223235-6411
58190266	ARCH CITY SEWIN	04/29/2019	\$ 1,220.00	\$ -	0 - Closed	10131294-6332
63190337	ASSETGENIE, INC	04/19/2019	\$ 5,754.50	\$ 2,983.50	8 - Printed	10-1617
63190324	ASSETGENIE, INC	04/04/2019	\$ 6,907.25	\$ -	0 - Closed	10-1617
48190265	AUTOMATIC CONTR	04/10/2019	\$ 7,880.00	\$ 7,880.00	8 - Printed	48406030-6521-00078
54190228	B & B AQUATICS	04/15/2019	\$ 1,632.00	\$ -	0 - Closed	11149334-6411-09416
63190327	B & H FOTO & EL	04/08/2019	\$ 543.90	\$ -	0 - Closed	10111BRN-6412
63190349	B & H FOTO & EL	04/30/2019	\$ 622.68	\$ 622.68	8 - Printed	10162710-6412-02001
63190335	B & H FOTO & EL	04/17/2019	\$ 805.44	\$ -	0 - Closed	10223380-6411
54190217	BANDEMER MARKET	04/08/2019	\$ 5,896.00	\$ -	0 - Closed	11149334-6411-09160
63190329	BEST BUY BUSINE	04/09/2019	\$ 5,979.74	\$ -	0 - Closed	10111519-6412 *
54190223	BLICK ART MATER	04/10/2019	\$ 1,000.00	\$ 1,000.00	8 - Printed	10111497-6411-91080
58190257	BLICK ART MATER	04/22/2019	\$ 1,508.79	\$ 1,508.79	8 - Printed	10111BRN-6411
85190413	BOND ARCHITECTS	04/26/2019	\$ 3,975.00	\$ 3,975.00	8 - Printed	40255044-6521-00791
97190155	BROADWAY TRUCK	04/16/2019	\$ 5,000.00	\$ 4,399.14	8 - Printed	10051410-6411
48190266	BROCK HOLDINGS	04/11/2019	\$ 13,062.00	\$ 13,062.00	8 - Printed	40406053-6521-00079
56190233	CAROLINA BIOLOG	04/15/2019	\$ 729.98	\$ 729.98	8 - Printed	10111BNA-6411
56190218	CASUAL TEES	04/01/2019	\$ 529.00	\$ -	0 - Closed	11149359-6411-09608
46190053	CASUAL TEES	04/11/2019	\$ 663.25	\$ -	0 - Closed	11149299-6411-07696
58190244	CASUAL TEES	04/08/2019	\$ 700.00	\$ -	0 - Closed	11149365-6411-08648
58190261	CASUAL TEES	04/26/2019	\$ 1,207.00	\$ 1,207.00	8 - Printed	11149365-6411-08155
58190245	CASUAL TEES	04/08/2019	\$ 1,447.23	\$ -	0 - Closed	11149365-6411-07640
63190333	CDW-G	04/17/2019	\$ 571.48	\$ 571.48	8 - Printed	10223181-6412
63190326	CDW-G	04/08/2019	\$ 608.79	\$ -	0 - Closed	10235330-6412
63190339	CDW-G	04/22/2019	\$ 899.72	\$ 899.72	8 - Printed	10235500-6412-00793
63190334	CDW-G	04/17/2019	\$ 1,076.48	\$ -	0 - Closed	10223234-6412
63190320	CDW-G	04/01/2019	\$ 1,475.25	\$ -	0 - Closed	10235150-6412
62190449	CENGAGE LEARNIN	04/17/2019	\$ 1,938.56	\$ 1,938.56	8 - Printed	10113516-6431
83190118	CENGAGE LEARNIN	04/08/2019	\$ 2,862.62	\$ -	0 - Closed	10223183-6412
62190447	CENGAGE LEARNIN	04/17/2019	\$ 6,058.00	\$ 6,058.00	8 - Printed	10113114-6431
62190448	CENGAGE LEARNIN	04/17/2019	\$ 9,087.00	\$ 9,087.00	8 - Printed	10113117-6431
62190450	CENGAGE LEARNIN	04/17/2019	\$ 14,539.20	\$ 14,539.20	8 - Printed	10113115-6431
48190269	CHIODINI ASSOCI	04/17/2019	\$ 7,620.00	\$ 7,620.00	8 - Printed	48406380-6521-00077
62190470	CI SELECT	04/24/2019	\$ 910.00	\$ 910.00	8 - Printed	10223235-6411
43190068	CI SELECT	04/26/2019	\$ 3,574.84	\$ 3,574.84	8 - Printed	10221102-6411
48190257	CLEAN CARTON CO	04/01/2019	\$ 1,000.00	\$ 297.16	8 - Printed	48406010-6521-00084
58190255	CLIMB SO ILL, I	04/15/2019	\$ 1,000.00	\$ -	0 - Closed	11149364-6391-07640
45190029	COMMITTEE FOR C	04/22/2019	\$ 2,499.00	\$ 2,499.00	8 - Printed	10111AZS-6412

PO#	Vendor Name	PO Date	Order Amount	Balance	Status	1st GL Account
9190048	COMMITTEE FOR C	04/15/2019	\$ 3,419.00	\$ 3,419.00	8 - Printed	10221271-6411
85190382	COMPI DISTRIBUT	04/08/2019	\$ 2,392.62	\$ 2,392.62	8 - Printed	10111AEK-6411
85190386	COMPI DISTRIBUT	04/09/2019	\$ 3,446.16	\$ 3,446.16	8 - Printed	10111ANP-6411
63190321	CONVERGEONE, IN	04/01/2019	\$ 6,840.00	\$ -	0 - Closed	10235010-6316
63190341	CONVERGEONE, IN	04/22/2019	\$ 9,750.00	\$ 9,750.00	8 - Printed	10235010-6316
60190017	COPELAND,THOMPS	04/26/2019	\$ 1,063.82	\$ 1,063.82	8 - Printed	10234540-6317
97190145	CRAFTSMEN UTILI	04/04/2019	\$ 1,055.73	\$ -	0 - Closed	10255747-6411-04150
74190017	CRESTLINE SPECI	04/17/2019	\$ 2,962.48	\$ 2,962.48	8 - Printed	10223244-6411
85190387	CROWN C SUPPLY	04/11/2019	\$ 1,436.95	\$ -	0 - Closed	102550EI-6411
58190243	CUSTOMINK.COM	04/08/2019	\$ 531.45	\$ -	0 - Closed	11149365-6411-07288
58190267	CUSTOMINK.COM	04/29/2019	\$ 577.60	\$ 577.60	8 - Printed	11149365-6411-09806
97190154	D & L TOWING	04/16/2019	\$ 1,500.00	\$ 1,125.00	8 - Printed	10255233-6391
11190077	DEMCO INC	04/26/2019	\$ 862.77	\$ 862.77	8 - Printed	10221690-6411
58190256	DEPCO ENTERPRIS	04/22/2019	\$ 2,065.00	\$ 2,065.00	8 - Printed	10131301-6332
56190242	DOUBLE GOOD, LL	04/29/2019	\$ 3,232.50	\$ 3,232.50	8 - Printed	11149342-6411-07464
62190473	EASTERN MISSOUR	04/26/2019	\$ 2,396.74	\$ 2,396.74	8 - Printed	10111211-6398
2190076	EGAN ENTERPRISE	04/15/2019	\$ 972.00	\$ -	0 - Closed	11149016-6398-07854
85190406	ENERGY PETROLEU	04/22/2019	\$ 5,297.32	\$ -	0 - Closed	10255AJS-6486
85190405	F J JURCIC CO	04/22/2019	\$ 940.00	\$ 940.00	8 - Printed	10255AIR-6332
85190388	F J JURCIC CO	04/11/2019	\$ 1,500.00	\$ -	0 - Closed	102550IS-6319
85190389	F J JURCIC CO	04/11/2019	\$ 1,500.00	\$ -	0 - Closed	102550IS-6319
85190377	F J JURCIC CO	04/04/2019	\$ 2,250.00	\$ -	0 - Closed	102550IS-6319
85190398	F J JURCIC CO	04/15/2019	\$ 4,101.00	\$ 4,101.00	8 - Printed	40251070-6521
85190415	F J JURCIC CO	04/29/2019	\$ 5,499.00	\$ 5,499.00	8 - Printed	41119020-6521-07992
63190325	FALCON TECHNOLO	04/08/2019	\$ 3,739.55	\$ 3,739.55	8 - Printed	10235370-6412
85190381	FENCE & DECK DE	04/08/2019	\$ 8,734.77	\$ 8,734.77	8 - Printed	40111140-6531
85190376	FERGUSON ENTERP	04/04/2019	\$ 1,500.00	\$ 1,500.00	8 - Printed	10255AHX-6411
85190375	FERGUSON ENTERP	04/04/2019	\$ 4,000.00	\$ 4,000.00	8 - Printed	102550DR-6411
83190132	FOLLETT SCHOOL	04/17/2019	\$ 513.40	\$ 513.40	8 - Printed	10223171-6412
83190122	FOLLETT SCHOOL	04/17/2019	\$ 526.71	\$ 526.71	8 - Printed	10223101-6441
83190136	FOLLETT SCHOOL	04/17/2019	\$ 530.00	\$ 530.00	8 - Printed	10223800-6441
83190133	FOLLETT SCHOOL	04/17/2019	\$ 560.81	\$ 560.81	8 - Printed	10223175-6412
83190142	FOLLETT SCHOOL	04/17/2019	\$ 611.89	\$ 611.89	8 - Printed	10223166-6412
83190123	FOLLETT SCHOOL	04/17/2019	\$ 614.96	\$ 614.96	8 - Printed	10223266-6412
41190031	FOLLETT SCHOOL	04/01/2019	\$ 628.65	\$ -	0 - Closed	11149273-6411-08759
83190149	FOLLETT SCHOOL	04/24/2019	\$ 707.51	\$ 707.51	8 - Printed	10223750-6441
83190126	FOLLETT SCHOOL	04/17/2019	\$ 744.76	\$ 744.76	8 - Printed	10223760-6441
83190124	FOLLETT SCHOOL	04/17/2019	\$ 770.00	\$ 770.00	8 - Printed	10223157-6412
83190130	FOLLETT SCHOOL	04/17/2019	\$ 1,030.00	\$ 1,030.00	8 - Printed	10223176-6412
83190140	FOLLETT SCHOOL	04/17/2019	\$ 1,043.86	\$ 1,043.86	8 - Printed	10223730-6441
83190147	FOLLETT SCHOOL	04/24/2019	\$ 1,065.00	\$ 1,065.00	8 - Printed	10223300-6412
83190125	FOLLETT SCHOOL	04/17/2019	\$ 1,100.00	\$ 1,100.00	8 - Printed	10223910-6441
83190117	FOLLETT SCHOOL	04/08/2019	\$ 1,298.77	\$ 1,298.77	8 - Printed	10223890-6441
83190144	FOLLETT SCHOOL	04/17/2019	\$ 1,310.00	\$ 1,310.00	8 - Printed	10223830-6441
83190135	FOLLETT SCHOOL	04/17/2019	\$ 1,520.03	\$ 1,520.03	8 - Printed	10223900-6441
83190146	FOLLETT SCHOOL	04/24/2019	\$ 1,601.00	\$ 1,601.00	8 - Printed	10223900-6441
83190119	FOLLETT SCHOOL	04/17/2019	\$ 1,759.67	\$ 1,759.67	8 - Printed	10223690-6441
83190134	FOLLETT SCHOOL	04/17/2019	\$ 2,319.51	\$ 2,319.51	8 - Printed	10223880-6441
83190148	FOLLETT SCHOOL	04/24/2019	\$ 2,427.48	\$ 2,427.48	8 - Printed	10223930-6441

PO#	Vendor Name	PO Date	Order Amount	Balance	Status	1st GL Account
83190139	FOLLETT SCHOOL	04/17/2019	\$ 2,590.00	\$ 2,590.00	8 - Printed	10223710-6441
83190120	FOLLETT SCHOOL	04/17/2019	\$ 2,604.83	\$ 2,604.83	8 - Printed	10223850-6441
83190131	FOLLETT SCHOOL	04/17/2019	\$ 3,002.15	\$ 3,002.15	8 - Printed	10223850-6441
83190143	FOLLETT SCHOOL	04/17/2019	\$ 3,725.81	\$ 3,725.81	8 - Printed	10223670-6441
83190141	FOLLETT SCHOOL	04/17/2019	\$ 3,750.54	\$ 3,750.54	8 - Printed	10223740-6441
83190127	FOLLETT SCHOOL	04/17/2019	\$ 3,772.92	\$ 3,772.92	8 - Printed	10223810-6441
83190150	FOLLETT SCHOOL	04/24/2019	\$ 4,317.47	\$ 4,317.47	8 - Printed	10223920-6441
83190129	FOLLETT SCHOOL	04/17/2019	\$ 4,700.00	\$ 4,700.00	8 - Printed	10223044-6441
83190151	FOLLETT SCHOOL	04/24/2019	\$ 4,711.53	\$ 4,711.53	8 - Printed	10223920-6441
83190137	FOLLETT SCHOOL	04/17/2019	\$ 4,831.85	\$ 4,831.85	8 - Printed	10223860-6441
58190242	FOREST SCIENTIF	04/08/2019	\$ 1,600.00	\$ 1,600.00	8 - Printed	10131301-6332
43190062	FRANKLIN COVEY	04/08/2019	\$ 775.66	\$ 775.66	8 - Printed	10241923-6411
54190215	FREESTYLE PHOTO	04/08/2019	\$ 1,321.81	\$ -	0 - Closed	10111BJW-6411
85190402	FRENCH GERLEMAN	04/19/2019	\$ 1,378.80	\$ 1,378.80	8 - Printed	40255044-6521
73190103	GATEWAY GOLF CA	04/15/2019	\$ 1,185.00	\$ -	0 - Closed	11149240-6391-09664
48190258	GEOTECHNOLOGY,	04/04/2019	\$ 7,500.00	\$ 7,500.00	8 - Printed	40406151-6531-00064
85190378	GOLTERMAN & SAB	04/04/2019	\$ 7,620.00	\$ 7,620.00	8 - Printed	10111ACU-6411
54190220	GOPHER SPORT	04/08/2019	\$ 2,015.70	\$ -	0 - Closed	10111BJR-6411
84190010	GREAT CIRCLE	04/15/2019	\$ 2,700.00	\$ -	0 - Closed	10122200-6311
84190008	GREAT CIRCLE	04/04/2019	\$ 2,700.00	\$ -	0 - Closed	10122200-6311
43190063	GREAT LAKES SPO	04/08/2019	\$ 1,285.82	\$ 1,285.82	8 - Printed	10111AWS-6411
58190251	GREATER ST.LOUI	04/11/2019	\$ 10,932.00	\$ -	0 - Closed	11399010-6398-09755
46190052	HEART ZONES INC	04/11/2019	\$ 1,226.12	\$ -	0 - Closed	10111BBY-6411
62190474	HEBERT, ERIK	04/30/2019	\$ 700.00	\$ 700.00	8 - Printed	10113487-6411
63190332	HEWLETT-PACKARD	04/16/2019	\$ 603.62	\$ 603.62	8 - Printed	10241250-6412
63190345	HEWLETT-PACKARD	04/24/2019	\$ 1,048.12	\$ 1,048.12	8 - Printed	10234066-6412
63190336	HEWLETT-PACKARD	04/17/2019	\$ 1,048.12	\$ 1,048.12	8 - Printed	10234980-6412
63190350	HEWLETT-PACKARD	04/30/2019	\$ 2,096.24	\$ 2,096.24	8 - Printed	10234228-6412
63190348	HEWLETT-PACKARD	04/24/2019	\$ 6,377.47	\$ 6,377.47	8 - Printed	10223234-6412
22190024	HIGHCROFT RIDGE	04/29/2019	\$ 5,262.00	\$ 5,262.00	8 - Printed	40251030-6541
85190404	HOME SERVICE OI	04/22/2019	\$ 4,714.18	\$ -	0 - Closed	10255AJS-6486
2190074	HUMANE SOCIETY	04/09/2019	\$ 500.00	\$ -	0 - Closed	11149016-6398-07854
62190468	IMAGE SOLUTIONS	04/23/2019	\$ 1,309.20	\$ 1,309.20	8 - Printed	11149036-6411-09665
85190392	INDUSTRIAL SOAP	04/11/2019	\$ 3,500.00	\$ 3,188.00	8 - Printed	10255812-6411
58190262	INTERCULTURAL S	04/26/2019	\$ 2,400.00	\$ 2,400.00	8 - Printed	11149374-6398-08003
23190043	INTER-STATE STU	04/29/2019	\$ 1,160.40	\$ 1,160.40	8 - Printed	11149249-6411-07992
1190046	J COLE INC.	04/26/2019	\$ 1,128.00	\$ 1,128.00	8 - Printed	11119050-6339-07992
85190379	JOHNSON CONTROL	04/04/2019	\$ 10,000.00	\$ 8,818.19	8 - Printed	102550FB-6332
56190228	JOSTENS INC	04/09/2019	\$ 747.33	\$ 747.33	8 - Printed	11149342-6411-08048
58190258	JOSTENS INC	04/22/2019	\$ 1,500.00	\$ 491.46	8 - Printed	11149364-6391-08048
50190145	JOSTENS INC	04/01/2019	\$ 1,500.00	\$ 1,500.00	8 - Printed	11149308-6411-08048
50190150	JOSTENS INC	04/04/2019	\$ 1,700.00	\$ 1,504.00	8 - Printed	11149308-6411-08048
50190158	JOSTENS INC	04/22/2019	\$ 6,500.00	\$ 6,500.00	8 - Printed	11149308-6411-08048
58190259	JUNIOR BUS TOUR	04/22/2019	\$ 4,000.00	\$ -	0 - Closed	11149374-6398-07676
56190219	JVP LLC	04/01/2019	\$ 700.00	\$ -	0 - Closed	11149342-6411-08904
54190219	KANSAS CITY AUD	04/08/2019	\$ 504.85	\$ 504.85	8 - Printed	102410B0-6411
73190099	KELLY PRESS	04/08/2019	\$ 3,000.00	\$ -	0 - Closed	11149156-6411-08363
56190229	KRUEGER POTTERY	04/09/2019	\$ 738.08	\$ -	0 - Closed	10111BNP-6411
54190225	KRUEGER POTTERY	04/10/2019	\$ 1,172.20	\$ 1,172.20	8 - Printed	10111497-6411-91080

PO#	Vendor Name	PO Date	Order Amount	Balance	Status	1st GL Account
73190105	LAFAYETTE HIGH	04/22/2019	\$ 1,275.00	\$ -	0 - Closed	10142450-6391 *
62190446	LAMP LANGUAGE	04/11/2019	\$ 810.75	\$ -	0 - Closed	10122040-6391
21190036	LEARNING A-Z	04/08/2019	\$ 1,099.45	\$ -	0 - Closed	10111ANM-6412
97190146	LEE HELMS INC	04/04/2019	\$ 5,000.00	\$ 3,161.68	8 - Printed	10051400-6411
50190152	LITANIA SPORTS	04/08/2019	\$ 3,239.00	\$ 3,239.00	8 - Printed	10-2150
62190465	LOGAN UNIVERSIT	04/17/2019	\$ 1,000.00	\$ -	0 - Closed	10111318-6339
97190147	LOWE AUTOMOTIVE	04/04/2019	\$ 8,500.00	\$ 5,454.36	8 - Printed	10051410-6411
58190252	MARYVILLE UNIVE	04/11/2019	\$ 2,000.00	\$ -	0 - Closed	11399010-6398-08365
62190454	MCGRAW HILL	04/17/2019	\$ 1,949.44	\$ 1,949.44	8 - Printed	10113516-6431
62190455	MCGRAW HILL	04/17/2019	\$ 8,122.68	\$ 8,122.68	8 - Printed	10113114-6431
62190456	MCGRAW HILL	04/17/2019	\$ 12,346.47	\$ 12,346.47	8 - Printed	10113117-6431
62190457	MCGRAW HILL	04/17/2019	\$ 12,346.47	\$ 12,346.47	8 - Printed	10113115-6431
10190060	METRO THEATER C	04/15/2019	\$ 1,550.00	\$ -	0 - Closed	11129010-6391-08409
34190007	MIDLAND PAPER C	04/22/2019	\$ 556.95	\$ 556.95	8 - Printed	10255412-6411
54190229	MO DECA	04/15/2019	\$ 1,100.00	\$ -	0 - Closed	11149670-6398-07672
58190247	MO DECA	04/08/2019	\$ 6,600.00	\$ -	0 - Closed	11149376-6398-07672
85190383	MOTOR CONTROL S	04/08/2019	\$ 1,130.00	\$ 1,130.00	8 - Printed	102550DX-6411
85190380	MPGTANDEM	04/04/2019	\$ 1,700.00	\$ 1,700.00	8 - Printed	10255AJL-6411
62190466	MUSSO, PETER	04/17/2019	\$ 725.00	\$ -	0 - Closed	10378210-6371-46560
62190476	MUSSO, PETER	04/30/2019	\$ 1,899.96	\$ 1,899.96	8 - Printed	10378180-6319-46560
21190037	NASCO	04/22/2019	\$ 1,777.00	\$ 1,777.00	8 - Printed	11149237-6411-07208
62190477	NICOLETTI, CRAI	04/30/2019	\$ 1,693.06	\$ 1,693.06	8 - Printed	10378180-6319-46560
63190346	NORTHSTAR AV	04/24/2019	\$ 2,705.00	\$ 2,705.00	8 - Printed	10235410-6412
11190066	OFFICE ESSENTIA	04/08/2019	\$ 500.00	\$ 370.22	8 - Printed	10111ACU-6411
1190044	OFFICE ESSENTIA	04/17/2019	\$ 500.00	\$ 500.00	8 - Printed	10111497-6411-94020
62190472	OFFICE ESSENTIA	04/24/2019	\$ 715.00	\$ 715.00	8 - Printed	10223235-6411
14190034	OFFICE ESSENTIA	04/29/2019	\$ 750.00	\$ 750.00	8 - Printed	10241315-6411
43190064	OFFICE ESSENTIA	04/09/2019	\$ 795.36	\$ -	0 - Closed	10221102-6411
22190023	OFFICE ESSENTIA	04/23/2019	\$ 1,000.00	\$ 554.28	8 - Printed	10241836-6411
54190224	OFFICE ESSENTIA	04/10/2019	\$ 1,000.00	\$ 531.39	8 - Printed	10111497-6411-91080
43190067	OFFICE ESSENTIA	04/16/2019	\$ 3,000.00	\$ 2,404.96	8 - Printed	10111AXA-6411
85190393	OVERHEAD DOOR	04/11/2019	\$ 650.00	\$ 650.00	8 - Printed	102410DC-6411
48190276	OVERHEAD DOOR	04/26/2019	\$ 6,283.00	\$ 6,283.00	8 - Printed	48406140-6521-00087
48190281	OVERHEAD DOOR	04/30/2019	\$ 6,283.00	\$ 6,283.00	8 - Printed	48406140-6521-00087
48190280	OVERHEAD DOOR	04/30/2019	\$ 6,855.00	\$ 6,855.00	8 - Printed	48406140-6521-00087
48190277	OVERHEAD DOOR	04/26/2019	\$ 6,855.00	\$ 6,855.00	8 - Printed	48406140-6521-00087
48190259	OVERHEAD DOOR	04/08/2019	\$ 10,000.00	\$ 10,000.00	8 - Printed	40406154-6541-00014
56190239	PASCO	04/22/2019	\$ 714.00	\$ 714.00	8 - Printed	10111BNA-6411
54190218	PASCO	04/08/2019	\$ 750.00	\$ 750.00	8 - Printed	10111BJS-6411
92190026	PAXEN PUBLISHIN	04/24/2019	\$ 9,596.40	\$ 9,596.40	8 - Printed	10162710-6431-02001
62190463	PEARSON EDUCATI	04/17/2019	\$ 1,643.14	\$ 1,643.14	8 - Printed	10113516-6431
62190459	PEARSON EDUCATI	04/17/2019	\$ 6,846.40	\$ 6,846.40	8 - Printed	10113114-6431
62190460	PEARSON EDUCATI	04/17/2019	\$ 10,269.60	\$ 10,269.60	8 - Printed	10113116-6431
62190462	PEARSON EDUCATI	04/17/2019	\$ 10,269.60	\$ 10,269.60	8 - Printed	10113115-6431
62190461	PEARSON EDUCATI	04/17/2019	\$ 13,692.80	\$ 13,692.80	8 - Printed	10113117-6431
50190149	PORTA PHONE	04/04/2019	\$ 599.00	\$ -	0 - Closed	10141230-6411
48190267	PROFESSIONAL SE	04/11/2019	\$ 4,856.00	\$ 4,856.00	8 - Printed	40406053-6521-00079
48190260	PROFESSIONAL SE	04/08/2019	\$ 14,807.00	\$ 14,807.00	8 - Printed	48406010-6521-00084
73190102	PROMOTIONS PRON	04/09/2019	\$ 1,061.00	\$ -	0 - Closed	11149310-6411-09664

PO#	Vendor Name	PO Date	Order Amount	Balance	Status	1st GL Account
85190412	PURCELL TIRES C	04/23/2019	\$ 1,000.00	\$ 1,000.00	8 - Printed	10255AIA-6411
50190156	QDOBA MEXICAN E	04/11/2019	\$ 1,030.00	\$ 1,030.00	8 - Printed	11149309-6411-09360
46190051	QUALITY LAPEL P	04/04/2019	\$ 515.18	\$ 515.18	8 - Printed	10241976-6411
97190160	RABEN TIRE CO.	04/16/2019	\$ 14,000.00	\$ 14,000.00	8 - Printed	10051430-6332
63190347	ROTH, WILLIAM J	04/24/2019	\$ 2,540.00	\$ 2,540.00	8 - Printed	48236010-6543-00107
97190156	RUSH TRUCK CENT	04/16/2019	\$ 14,500.00	\$ 3,157.43	8 - Printed	10051410-6411
97190151	RUSH TRUCK CENT	04/04/2019	\$ 14,500.00	\$ -	0 - Closed	10051410-6411
14190032	SAM'S CLUB DIRE	04/15/2019	\$ 500.00	\$ 380.68	8 - Printed	11149207-6411-07992
48190278	SCHILLER'S IMAG	04/26/2019	\$ 675.00	\$ 675.00	8 - Printed	48406020-6521-00084
48190272	SCHILLER'S IMAG	04/19/2019	\$ 825.00	\$ 825.00	8 - Printed	48406160-6521-00084
48190268	SCHILLER'S IMAG	04/15/2019	\$ 825.00	\$ 825.00	8 - Printed	48406160-6521-00084
85190410	SCHILLER'S IMAG	04/23/2019	\$ 4,006.00	\$ 4,006.00	8 - Printed	40255044-6521
85190384	SCHILLER'S IMAG	04/08/2019	\$ 4,520.00	\$ 4,520.00	8 - Printed	40111052-6541
48190270	SCHILLER'S IMAG	04/17/2019	\$ 5,070.00	\$ 5,070.00	8 - Printed	48406390-6521-00078
85190414	SCHILLER'S IMAG	04/26/2019	\$ 6,918.00	\$ 6,918.00	8 - Printed	40111105-6542
46190055	SCHOLASTIC	04/23/2019	\$ 1,268.87	\$ -	0 - Closed	11149299-6411-08320
9190049	SCHOLASTIC	04/15/2019	\$ 2,442.83	\$ -	0 - Closed	11149186-6411-08320
22190021	SCHOLASTIC	04/01/2019	\$ 3,377.28	\$ -	0 - Closed	10221062-6411
11190058	SCHOLASTIC	04/01/2019	\$ 4,823.89	\$ -	0 - Closed	11149197-6411-07992
1190045	SCHOOL SPECIALT	04/17/2019	\$ 1,000.00	\$ 1,000.00	8 - Printed	10111497-6411-94020
11190059	SCHOOL SPECIALT	04/01/2019	\$ 3,000.00	\$ 1,335.33	8 - Printed	10111ACU-6411
56190244	SHERATON WEST P	04/29/2019	\$ 2,000.00	\$ -	0 - Closed	11149339-6391-08808
56190221	SHERATON WEST P	04/01/2019	\$ 14,000.00	\$ -	0 - Closed	11149339-6391-08808
63190328	SITY COMMUNICAT	04/08/2019	\$ 1,000.00	\$ 1,000.00	8 - Printed	10235080-6337
56190230	SIX FLAGS	04/09/2019	\$ 3,986.05	\$ 3,986.05	8 - Printed	11149349-6398-09008
58190248	SIX FLAGS	04/08/2019	\$ 4,381.50	\$ -	0 - Closed	11149381-6398-08464
50190146	SIX FLAGS	04/01/2019	\$ 5,000.00	\$ 5,000.00	8 - Printed	11149860-6398-09008
84190009	SPECIAL SCHOOL	04/04/2019	\$ 2,575.34	\$ -	0 - Closed	10122200-6311
79190013	SPRINGBOARD	04/17/2019	\$ 1,661.00	\$ -	0 - Closed	10352180-6312
54190214	SSI FURNISHINGS	04/04/2019	\$ 5,089.00	\$ 5,089.00	8 - Printed	10111BJT-6411
58190254	ST LOUIS SUWA S	04/11/2019	\$ 2,600.00	\$ -	0 - Closed	11399010-6398-09415
19190044	ST. LOUIS AMBUS	04/16/2019	\$ 1,500.00	\$ -	0 - Closed	11149229-6411-07992
50190147	ST. LOUIS CARDI	04/01/2019	\$ 12,400.00	\$ -	0 - Closed	11149313-6411-07264
85190397	ST. LOUIS CNTY	04/11/2019	\$ 1,416.00	\$ -	0 - Closed	102550EG-6411
81190049	ST. LOUIS CNTY	04/24/2019	\$ 5,920.00	\$ -	0 - Closed	10052360-6391
63190323	STAPLES	04/01/2019	\$ 594.40	\$ -	0 - Closed	10111BNL-6412
96190002	STL AMRAMP	04/15/2019	\$ 4,000.00	\$ 4,000.00	8 - Printed	10234184-6339
85190385	SUMMIT SUPPLY C	04/08/2019	\$ 1,847.00	\$ 1,847.00	8 - Printed	10255AIT-6411
50190160	SUN MOUNTAIN MO	04/26/2019	\$ 1,060.00	\$ 1,060.00	8 - Printed	10141230-6411
62190444	TETON SCIENCE S	04/08/2019	\$ 4,835.25	\$ -	0 - Closed	11149036-6411-09648
58190250	TJ'S PIZZA	04/08/2019	\$ 1,051.50	\$ -	0 - Closed	11149365-6411-07318
85190396	TRANE U.S. INC	04/11/2019	\$ 1,199.78	\$ -	0 - Closed	102550DX-6411
85190399	TRANE U.S. INC	04/15/2019	\$ 1,541.32	\$ 1,541.32	8 - Printed	102550DX-6411
48190279	TRANE U.S. INC	04/26/2019	\$ 7,500.00	\$ -	0 - Closed	102550KK-6339
85190401	TRANE U.S. INC	04/22/2019	\$ 11,980.50	\$ 11,980.50	8 - Printed	102550FU-6334
97190153	TRUCK CENTERS I	04/11/2019	\$ 1,273.54	\$ -	0 - Closed	10-2150
97190150	TRUCK CENTERS I	04/04/2019	\$ 1,500.00	\$ 841.16	8 - Printed	10051410-6411
97190149	TRUCK CENTERS I	04/04/2019	\$ 1,650.84	\$ -	0 - Closed	10051470-6332
97190148	TRUCK CENTERS I	04/04/2019	\$ 2,688.72	\$ -	0 - Closed	10051470-6332

PO#	Vendor Name	PO Date	Order Amount	Balance	Status	1st GL Account
97190164	TRUCK CENTERS I	04/26/2019	\$ 3,347.13	\$ 3,347.13	8 - Printed	10051470-6332
85190395	UNIPAK CORP.	04/11/2019	\$ 14,799.00	\$ 14,799.00	8 - Printed	10255825-6411
50190157	UNIVERSAL CREAT	04/15/2019	\$ 2,030.00	\$ -	0 - Closed	11149308-6411-07527
58190253	USA TOURS, INC	04/11/2019	\$ 1,035.00	\$ -	0 - Closed	10251343-6342
58190264	VARSITY SPIRIT	04/26/2019	\$ 2,770.00	\$ 2,770.00	8 - Printed	11149376-6398-07464
58190265	VARSITY SPIRIT	04/26/2019	\$ 2,980.00	\$ 2,980.00	8 - Printed	11149376-6398-07464
56190241	VARSITY SPIRIT	04/26/2019	\$ 4,952.70	\$ 4,952.70	8 - Printed	11149342-6411-07464
56190240	VARSITY SPIRIT	04/26/2019	\$ 11,625.00	\$ -	0 - Closed	11149346-6398-07464
56190236	VERNIER SOFTWAR	04/15/2019	\$ 706.66	\$ -	0 - Closed	10111BNA-6411
12190017	VIRCO MFG CORP	04/26/2019	\$ 3,655.34	\$ 3,655.34	8 - Printed	10111AEL-6411
41190032	VIRCO MFG CORP	04/08/2019	\$ 4,219.28	\$ -	0 - Closed	10241899-6411
56190237	W.C & D ENTERPR	04/16/2019	\$ 807.67	\$ 807.67	8 - Printed	11149342-6411-08048
50190148	W.C & D ENTERPR	04/01/2019	\$ 942.67	\$ 942.67	8 - Printed	11149307-6391-08048
58190249	W.C & D ENTERPR	04/08/2019	\$ 1,181.00	\$ 1,181.00	8 - Printed	11149364-6391-08048
54190230	W.C & D ENTERPR	04/15/2019	\$ 1,621.00	\$ 1,621.00	8 - Printed	11149321-6411-08048
56190220	WASHINGTON UNIV	04/01/2019	\$ 1,000.00	\$ -	0 - Closed	11149342-6411-09832
43190069	WENGER CORP	04/26/2019	\$ 13,410.00	\$ 13,410.00	8 - Printed	40111091-6541
97190159	WINDSHIELDS & M	04/16/2019	\$ 600.00	\$ -	0 - Closed	10051470-6332
50190153	WINNING STREAK	04/08/2019	\$ 537.60	\$ -	0 - Closed	11149313-6411-09800
50190151	WINNING STREAK	04/04/2019	\$ 544.00	\$ -	0 - Closed	11149313-6411-09800
54190222	WINNING STREAK	04/08/2019	\$ 969.00	\$ -	0 - Closed	11149334-6411-09816
54190231	WINNING STREAK	04/15/2019	\$ 2,678.40	\$ 2,678.40	8 - Printed	10141490-6411
63190331	WIRED TECHNOLOG	04/11/2019	\$ 2,388.80	\$ 2,388.80	8 - Printed	102410DC-6412
43190066	WOLVERINE SPORT	04/15/2019	\$ 1,415.01	\$ 1,415.01	8 - Printed	10111AWS-6411
TOTAL:			\$ 871,771.38			

\$15,000+
APRIL FY19

PO#	Vendor Name	PO Date	Order Amount	Balance	Status	1st GL Account
48190273	ADVANCED ENVIRO	04/23/2019	\$ 37,777.00	\$ 37,777.00	8 - Printed	48406010-6521-00084
85190391	AUTOMATIC CONTR	04/11/2019	\$ 150,805.00	\$ 150,805.00	8 - Printed	40255300-6521
85190390	AUTOMATIC CONTR	04/11/2019	\$ 153,657.00	\$ 153,657.00	8 - Printed	40255300-6521
85190408	BROADWAY TRUCK	04/23/2019	\$ 57,507.00	\$ 57,507.00	8 - Printed	40255140-6551
63190340	CDW-G	04/22/2019	\$ 66,211.91	\$ 66,211.91	8 - Printed	10-1705 *
85190403	CI SELECT	04/19/2019	\$ 140,100.00	\$ 140,100.00	8 - Printed	48406010-6521-00084
56190227	COLLEGE BOARD-M	04/09/2019	\$ 26,775.00	\$ 26,775.00	8 - Printed	11149339-6391-09632
61190025	DUTCH HOLLOW SE	04/04/2019	\$ 30,102.40	\$ 30,102.40	8 - Printed	10-1615
97190152	ENERGY PETROLEU	04/09/2019	\$ 16,765.05	\$ -	0 - Closed	10051380-6486
63190338	FALCON TECHNOLO	04/22/2019	\$ 47,576.06	\$ 47,576.06	8 - Printed	48236010-6543-00106
48190271	FGM ARCHITECTS	04/19/2019	\$ 90,365.00	\$ 90,365.00	8 - Printed	40406174-6521-00078
50190155	FRONTENAC PROPE	04/10/2019	\$ 16,000.00	\$ -	0 - Closed	11149309-6411-08808
97190162	HOME SERVICE OI	04/17/2019	\$ 17,147.55	\$ -	0 - Closed	10051380-6486
85190400	INDUSTRIAL SOAP	04/16/2019	\$ 55,000.00	\$ 53,244.10	8 - Printed	10255821-6411
85190407	JOHN KALICAK CO	04/22/2019	\$ 41,926.00	\$ 41,926.00	8 - Printed	41119010-6542-07835
58190263	MARRIOTT BUSINE	04/26/2019	\$ 36,250.00	\$ 36,250.00	8 - Printed	11149364-6391-08808
48190274	MIDWEST SERVICE	04/23/2019	\$ 918,880.00	\$ 918,880.00	8 - Printed	48406030-6521-00078
22190022	MIRACLE RECREAT	04/04/2019	\$ 23,385.00	\$ 23,385.00	8 - Printed	40251030-6541 *
60190016	PIPER JAFFRAY &	04/11/2019	\$ 25,000.00	\$ -	0 - Closed	48536010-6631
48190262	PROFESSIONAL SE	04/08/2019	\$ 32,023.00	\$ 32,023.00	8 - Printed	48406380-6521-00077
48190261	PROFESSIONAL SE	04/08/2019	\$ 94,407.00	\$ 94,407.00	8 - Printed	48406030-6521-00078
32190010	PROFESSIONAL SO	04/23/2019	\$ 36,506.70	\$ -	0 - Closed	10213117-6412
85190409	PUNDMANN FORD	04/23/2019	\$ 164,088.00	\$ 164,088.00	8 - Printed	40255530-6551
60190015	STANDARD AND PO	04/09/2019	\$ 31,500.00	\$ -	0 - Closed	48536010-6631
48190263	TARKETT USA INC	04/08/2019	\$ 38,105.87	\$ 38,105.87	8 - Printed	48406070-6521-00084
48190264	TARKETT USA INC	04/08/2019	\$ 178,595.58	\$ 178,595.58	8 - Printed	48406430-6521-00084
85190411	THERMAL MECHANI	04/23/2019	\$ 21,568.00	\$ 21,568.00	8 - Printed	10-2150
97190161	UNITED CAB	04/16/2019	\$ 200,000.00	\$ 101,797.30	8 - Printed	10255756-6341
48190275	WRIGHT CONSTRUC	04/23/2019	\$ 8,965,000.00	\$ 8,965,000.00	8 - Printed	48406030-6521-00078
72190016	YMCA TROUT LODG	04/08/2019	\$ 19,800.00	\$ -	0 - Closed	10111151-6398
TOTAL:			\$ 11,732,824.12			

PICKER, MARYELLEN	355922	02252019	REG	6411	488580	\$	600.00
PINEAPPLE APPEAL	356870	13903	REG	6411	488741	\$	756.00
PJ PRINTING	355546	10122407	040419	6411	3636	\$	780.00
PROJECT LEAD THE WAY	360063	360063		6319	0	\$	750.00
RAISING CANE'S #225	360101	360101		6411	0	\$	1,973.05
SAM'S CLUB DIRECT	358548	000000-4/9/19	EARLY	6411	0	\$	645.36
SCHOOL HEALTH CORPOR	359125	3587260-00	050219	6411	0	\$	824.81
ST. LOUIS SPORTSWEAR	357440	53361	041819	6411	3730	\$	501.25
ST. LOUIS SPORTSWEAR	357438	53429	041819	6411	3730	\$	857.50
TED DREWES	355999	69050	041819	6411	3731	\$	562.00
THERMAL MECHANICS	355561	20179	REG	6332	488354	\$	690.00
TOM EVANS	359646	19869	050219	6411	0	\$	692.20
VARSITY SPIRIT FASHI	360142	360142		6398	0	\$	850.00
WINNING STREAK	356974	116307	041819	6411	3736	\$	606.25
WOODARD CLEANING & R	355943	37430	REG	6339	488615	\$	683.52
					TOTAL:		\$ 50,282.35

\$15,000+
APRIL - FY19

VENDOR NAME	DOCUMENT	INVOICE	WARRANT	OBJECT	CHECK NO	AMOUNT
GILMORE & BELL ATTOR	357485	8037843	ACH	6631	3701	\$ 46,000.00

SPOT MARKET REPORT - APRIL 2019

Purchase Order #	Date	Vendor #	Vendor Name	Comm. Code	QTY	UOM	Unit Price	Description	Object	Account Amt
61190001	07/05/18	631777	COSTCO	202				8.5 x 11 WHITE COPY PAPER - 30% RECYCLED PAPER - GP SPECTRUM		
61190001					840	EACH	\$ 29.74		1615	\$ 24,981.60
61190012	08/15/18	809084	OFFICE ESSENTIALS INCORPORATED	202				8.5 x 11 WHITE COPY PAPER - 30% RECYCLED PAPER - UNIVERSAL		
61190012					840	EACH	\$ 30.50		1615	\$ 25,620.00
61190016	09/14/18	809084	OFFICE ESSENTIALS INCORPORATED	202				8.5 x 11 WHITE COPY PAPER - 30% RECYCLED PAPER - UNIVERSAL		
61190016					840	EACH	\$ 31.90		1615	\$ 26,796.00
61190018	10/15/18	622854	CONTRACT PAPER GROUP, INC	202				8.5 x 11 WHITE COPY PAPER - 30% RECYCLED PAPER - GEORGIA PACIFIC SPECTRUM		
61190018					840	EACH	\$ 31.89		1615	\$ 26,787.60
61190023	12/20/18	632285	DUTCH HOLLOW SERVICES & SUPPLIES INC.	202				8.5 x 11 WHITE COPY PAPER - 30% RECYCLED PAPER - UNIVERSAL #20030		
61190023					840	EACH	\$ 31.72		1615	\$ 26,644.80
61190024	02/08/2019	632285	DUTCH HOLLOW SERVICES & SUPPLIES INC.	202				8.5 x 11 WHITE COPY PAPER - 30% RECYCLED PAPER - UNIVERSAL #20030		
61190024					840	EACH	\$ 31.72		1615	\$ 26,644.80
61190025	04/04/2019	632285	DUTCH HOLLOW SERVICES & SUPPLIES INC.	202				8.5 x 11 WHITE COPY PAPER - 30% RECYCLED PAPER	1615	\$ 27,484.80
61190025					840	EACH	32.72000		1615	\$ 27,484.80
61190025					80	EACH	32.72000	8.5 X 11 WHITE COPY PAPER - 30% RECYCLED PAPER	1615	\$ 2,617.60
61190025										
85190141	07/31/18	615999	FROESEL OIL CO, INC	400				RFG REG UNLEADED		
85190141					204	EACH	\$ 2.25		6486	\$ 458.80
85190141					410	EACH	\$ 2.36	ULS #2 DIESEL	6486	\$ 966.78
85190141					1	EACH	\$ 301.44	STATE AND FEDERAL TAXES AND FEES	6486	\$ 301.44
85190141					1097	EACH	\$ 2.25	RFG REG UNLEADED	6486	\$ 2,467.15
85190141										

85190171	08/17/18	615999	FROESEL OIL CO, INC	400							
85190171					591	EACH	\$	2.12	RFG REG UNLEADED		
85190171										6486	\$ 1,251.74
85190171					384	EACH	\$	2.23	ULS #2 DIESEL		
85190171										6486	\$ 855.94
85190171					1	EACH	\$	222.88	STATE AND FEDERAL TAXES AND FEES		
85190171										6486	\$ 222.88
85190171					250	EACH	\$	2.12	RFG REG UNLEADED		
85190171										6486	\$ 529.50
85190171					40	EACH	\$	2.23	ULS#2 DIESEL		
85190171										6486	\$ 89.16
85190194	08/28/18	615999	FROESEL OIL CO, INC	400							
85190194					1570	EACH	\$	2.16	RFG REG UNLEADED		
85190194										6486	\$ 3,388.06
85190194					330	EACH	\$	2.24	ULS #2 DIESEL		
85190194										6486	\$ 738.87
85190194					1	EACH	\$	410.61	STATE AND FEDERAL TAXES AND FEES		
85190194										6486	\$ 410.61
85190194					431	EACH	\$	2.16	RFG REG UNLEADED		
85190194										6486	\$ 930.10
85190199	09/04/18	615999	FROESEL OIL CO, INC	400							
85190199					1650	EACH	\$	2.13	RFG REG UNLEADED		
85190199										6486	\$ 3,512.69
85190199					375	EACH	\$	2.25	ULS #2 DIESEL		
85190199										6486	\$ 844.76
85190199					1	EACH	\$	435.98	STATE AND FEDERAL TAXES AND FEES		
85190199										6486	\$ 435.98
85190199					450	EACH	\$	2.13	RFG REG UNLEADED		
85190199										6486	\$ 958.01
85190218	09/12/18	615999	FROESEL OIL CO, INC	400							
85190218					1773	EACH	\$	2.04	RFG REG UNLEADED		
85190218										6486	\$ 3,624.01
85190218					340	EACH	\$	2.34	ULS #2 DIESEL		
85190218										6486	\$ 794.92
85190218					1	EACH	\$	447.15	STATE AND FEDERAL TAXES AND FEES		
85190218										6486	\$ 447.15
85190218					430	EACH	\$	2.04	RFG REG UNLEADED		
85190218										6486	\$ 878.92
85190231	09/25/18	615999	FROESEL OIL CO, INC	400							
85190231					1299	EACH	\$	2.10	RFG REG UNLEADED		
85190231										6486	\$ 2,726.60
85190231					342	EACH	\$	2.39	ULS #2 DIESEL		
85190231										6486	\$ 817.04
85190231					1	EACH	\$	359.89	STATE AND FEDERAL TAXES AND FEES		
85190231										6486	\$ 359.89
85190231					402	EACH	\$	2.10	RFG REG UNLEADED		
85190231										6486	\$ 843.80
85190240	10/10/18	615999	FROESEL OIL CO, INC	400							

85190240				1463	EACH	\$	2.18	RFG REG UNLEADED			
85190240									6486	\$	3,187.88
85190240				371	EACH	\$	2.44	ULS #2 DIESEL			
85190240									6486	\$	904.87
85190240				1	EACH	\$	398.81	STATE AND FEDERAL TAXES AND FEES			
85190240									6486	\$	398.81
85190240				430	EACH	\$	2.18	RFG REG UNLEADED			
85190240									6486	\$	936.97
85190265	11/08/18	642477	ENERGY PETROLEUM COMPANY	400							
85190265				1671.2	EACH	\$	2.13	NO LEAD 87 OCT RFG			
85190265									6486	\$	3,559.66
85190265				430.1	EACH	\$	2.13	NO LEAD 87 OCT RFG			
85190265									6486	\$	916.11
85190265				260	EACH	\$	2.55	#2 ULTRA LS DIESEL			
85190265									6486	\$	663.00
85190265				1	EACH	\$	294.34	FOR INVOICE 647834 FEDERAL AND STATE TAXES			
85190265									6486	\$	294.34
85190265				1	EACH	\$	75.76	FOR INVOICE 647836 FEDERAL AND STATE TAXES			
85190265									6486	\$	75.76
85190265				1	EACH	\$	45.85	FOR INVOICE 651276 FEDERAL AND STATE TAXES			
85190265									6486	\$	45.85
85190271	11/20/18	642477	ENERGY PETROLEUM COMPANY	400							
85190271				430	EACH	\$	1.96	NO LEAD 87 OCT RFG			
85190271									6486	\$	842.80
85190271				2270	EACH	\$	1.96	NO LEAD 87 OCT RFG			
85190271									6486	\$	4,449.20
85190271				230	EACH	\$	2.45	#2 ULTRA LS DIESEL			
85190271									6486	\$	563.50
85190271				1	EACH	\$	75.74	FOR INVOICE 647834 FEDERAL AND STATE TAXES			
85190271									6486	\$	75.74
85190271				1	EACH	\$	399.82	FOR INVOICE 647836 FEDERAL AND STATE TAXES			
85190271									6486	\$	399.82
85190271				1	EACH	\$	40.56	FOR INVOICE 651276 FEDERAL AND STATE TAXES			
85190271									6486	\$	40.56
85190283	12/06/18	642477	ENERGY PETROLEUM COMPANY	400							
85190283				425.1	EACH	\$	1.76	NO LEAD 87 OCT RFG			
85190283									6486	\$	748.18
85190283				1407.7	EACH	\$	1.73	NO LEAD 87 OCT RFG			
85190283									6486	\$	2,435.32

85190283				1	EACH	\$	74.88	FOR #6193473 FEDERAL AND STATE TAXES			
85190283									6486	\$	74.88
85190283				1	EACH	\$	247.94	FOR #6193474 FEDERAL AND STATE TAXES			
85190283									6486	\$	247.94
85190284	12/06/18	642477	ENERGY PETROLEUM COMPANY	400							
85190284				908	EACH	\$	1.74	NO LEAD 87 OCT RFG			
85190284									6486	\$	1,579.92
85190284				290	EACH	\$	1.74	NO LEAD 87 OCT RFG			
85190284									6486	\$	504.60
85190284				402	EACH	\$	2.32	#2 ULTRA PREM LS DIESEL			
85190284									6486	\$	931.35
85190284				1	EACH	\$	159.93	FOR #1451221 FEDERAL AND STATE TAXES			
85190284									6486	\$	159.93
85190284				1	EACH	\$	51.08	FOR #1451222 FEDERAL AND STATE TAXES			
85190284									6486	\$	51.08
85190284				1	EACH	\$	70.89	FOR #1451220 FEDERAL AND STATE TAXES			
85190284									6486	\$	70.89
85190301	01/14/19	642477	ENERGY PETROLEUM COMPANY	400							
85190301				420	EACH	\$	1.56	NO LEAD 87 OCT RFG			
85190301									6486	\$	656.75
85190301				1370	EACH	\$	1.56	NO LEAD 87 OCT RFG			
85190301									6486	\$	2,142.27
85190301				232	EACH	\$	1.93	#2 ULTRA LS DIESEL			
85190301									6486	\$	447.76
85190301				1	EACH	\$	73.97	FOR 6196918 FEDERAL AND STATE TAXES			
85190301									6486	\$	73.97
85190301				1	EACH	\$	40.91	FOR 61969201 FEDERAL AND STATE TAXES			
85190301									6486	\$	40.91
85190301				1	EACH	\$	241.30	FOR 6196919 FEDERAL AND STATE TAXES			
85190301									6486	\$	241.30
85190307	01/18/19	642477	ENERGY PETROLEUM COMPANY	400							
85190307				1561.1	EACH	\$	1.58	NO LEAD 87 OCT RFG			
85190307									6486	\$	2,466.54
85190307				425	EACH	\$	1.58	NO LEAD 87 OCT RFG			
85190307									6486	\$	671.50
85190307				1	EACH	\$	274.95	FOR 1451253 FEDERAL AND STATE TAXES			
85190307									6486	\$	274.95
85190307				1	EACH	\$	74.86	FOR 1451252 FEDERAL AND STATE TAXES			
85190307									6486	\$	74.86
85190313	02/01/2019	642477	ENERGY PETROLEUM COMPANY	400							
85190313				1485	EACH	\$	1.50	NO LEAD 87 OCT RFG			
85190313									6486	\$	2,227.50
85190313				425	EACH	\$	1.50	NO LEAD 87 OCT RFG			
85190313									6486	\$	637.50

85190313				1	EACH	\$	260.18	FOR 6202703 FEDERAL AND STATE TAXES			
85190313									6486	\$	260.18
85190313				1	EACH	\$	74.47	FOR 6202702 FEDERAL AND STATE TAXES			
85190313									6486	\$	74.47
85190333	02/20/2019	800559	KIESEL COMPANY	400							
85190333				356.6	EACH	\$	1.59	87 OCT 10% ETHANOL BLEND GASOLINE			
85190333									6486	\$	566.99
85190333				750.6	EACH	\$	1.59	87 OCT 10% ETHANOL BLEND GASOLINE			
85190333									6486	\$	1,193.45
			ENERGY PETROLEUM								
85190338	02/21/2019	642477	COMPANY	400							
85190338				335	EACH	\$	1.54	NO LEAD 87 OCT RFG			
85190338									6486	\$	515.90
85190338				793	EACH	\$	1.54	NO LEAD 87 OCT RFG			
85190338									6486	\$	1,221.22
85190338				1	EACH	\$	58.69	FOR 30643384 FEDERAL AND STATE TAXES			
85190338									6486	\$	58.69
85190338				1	EACH	\$	138.94	FOR 1454821 FEDERAL AND STATE TAXES			
85190338									6486	\$	138.94
85190338				793	EACH	\$	1.68	#2 ULTRA PREM LSD (SEASONAL)			
85190338									6486	\$	1,332.24
85190338				1	EACH	\$	72.96	FOR 30643385 FEDERAL AND STATE TAXES			
85190338									6486	\$	72.96
85190345	02/22/2019	626035	HOME SERVICE OIL CO INC	400							
85190345				2583.5	EACH	\$	1.64	RFG 87 OCT UNL REG - 1904500606			
85190345									6486	\$	4,236.94
85190345				401	EACH	\$	1.64	RFG 87 OCT UNL REG - 543427			
85190345									6486	\$	657.64
85190345				22.8	EACH	\$	1.64	RFG 87 OCT UNL REG - 1904500607			
85190345									6486	\$	37.39
								STATE AND FEDERAL TAXES AND FEES -			
85190345				1	EACH	\$	452.63	1904500607			
85190345									6486	\$	452.63
85190345				1	EACH	\$	70.25	STATE AND FEDERAL TAXES AND FEES - 543427			
85190345									6486	\$	70.25
								STATE AND FEDERAL TAXES AND FEES -			
85190345				1	EACH	\$	4.00	1904500607			
85190345									6486	\$	4.00
			ENERGY PETROLEUM								
85190348	02/22/2019	642477	COMPANY	400							
85190348				309.1	EACH	\$	1.63	NO LEAD 87 OCT RFG - 6206685			
85190348									6486	\$	503.83
85190348				1	EACH	\$	54.16	FOR 6206685 FEDERAL AND STATE TAXES			
85190348									6486	\$	54.16
85190348				1	EACH	\$	69.66	FOR 6206686 FEDERAL AND STATE TAXES			
85190348									6486	\$	69.66
85190348				397.6	EACH	\$	2.08	#2 ULTRA PREM LSD (SEASONAL) - 6206686			

85190348								6486	\$	827.01
85190362	03/19/2019	642477	ENERGY PETROLEUM COMPAN	400						
85190362					1050	EACH	1.78000 NO LEAD 87 OCT RFG			
85190362								6486	\$	1,869.00
85190362					425	EACH	1.78000 NO LEAD 87 OCT RFG			
85190362								6486	\$	756.50
85190362					1	EACH	183.97000 FOR 30643384 FEDERAL AND STATE TAXES			
85190362								6486	\$	183.97
85190362					1	EACH	74.47000 FOR 1454821 FEDERAL AND STATE TAXES			
85190362								6486	\$	74.47
85190362					350	EACH	2.18760 #2 ULTRA PREM LSD (SEASONAL)			
85190362								6486	\$	765.66
85190362					1	EACH	61.33000 FOR 30643385 FEDERAL AND STATE TAXES			
85190362								6486	\$	61.33
85190363	03/19/2019	800559	KIESEL COMPANY	400						
85190363					1080.1	EACH	1.90000 87 OCT 10% ETHANOL BLEND GASOLINE			
85190363								6486	\$	2,052.19
85190363					404.8	EACH	1.90000 87 OCT 10% ETHANOL BLEND GASOLINE			
85190363								6486	\$	769.12
85190363					200.3	EACH	2.28000 #2 CLEAR ULS DIESEL			
85190363								6486	\$	456.68
85190363					1	EACH	376.08000 STATE AND FEDERAL TAXES AND FEES			
85190363								6486	\$	376.08
85190404	04/22/2019	626035	HOME SERVICE OIL CO INC	400						
85190404					1600.1	EACH	2.18000 RFG 87 OCT UNL REG - 1907900812			
85190404								6486	\$	3,488.22
85190404					401.5	EACH	2.18000 RFG 87 OCT UNL REG - 543427			
85190404								6486	\$	875.27
85190404					1	EACH	280.34000 STATE AND FEDERAL TAXES AND FEES - 1907900812			
85190404								6486	\$	280.34
85190404					1	EACH	70.35000 STATE AND FEDERAL TAXES AND FEES - 1907900811			
85190404								6486	\$	70.35
85190406	04/22/2019	642477	ENERGY PETROLEUM COMPAN	400						
85190406					1572	EACH	2.12000 NO LEAD 87 OCT RFG			
85190406								6486	\$	3,332.64
85190406					430	EACH	2.12000 NO LEAD 87 OCT RFG			
85190406								6486	\$	911.60
85190406					306	EACH	2.12000 #2 ULTRA LS DIESEL			
85190406								6486	\$	648.72
85190406					1	EACH	275.41000 FEDERAL AND STATE TAXES AND FEES - 18014441			
85190406								6486	\$	275.41
85190406					1	EACH	75.34000 FEDERAL AND STATE TAXES AND FEES - 18014431			
85190406								6486	\$	75.34
85190406					1	EACH	53.61000 FEDERAL AND STATE TAXES AND FEES - 18014421			
85190406								6486	\$	53.61
97190059	09/12/18	615999	FROESEL OIL CO, INC	500						

97190059						CONVENIENT PURCHASE ORDER FOR THE PURCHASE OF PREMIUM ULTRA LOW SULFUR #2			
97190059				7500	EACH	\$ 2.33 DIESEL FUEL FOR SCHOOL BUSES. BID #19P-30	6486	\$	17,467.50
97190059				7500	EACH	\$ 0.00 FEDERAL OIL SPILL FEE	6486	\$	16.05
97190059				7500	EACH	\$ 0.00 MO AGI TAX PER GAL	6486	\$	7.50
97190059				7500	EACH	\$ 0.17 MO STATE TAX PER GAL	6486	\$	1,275.00
97190059				7500	EACH	\$ - FED SUPER FUND TAX PER GAL EXTRA	6486	\$	-
97190059				7500	EACH	\$ 0.00 MO ADG INSPECTION FEE TAX PER GAL	6486	\$	5.25
97190059				7500	EACH	\$ 0.00 MO USTD TRANSP LOAD FEE TAX PER GAL	6486	\$	18.75
97190063	09/26/18	800559	KIESEL COMPANY	500					
97190063						7000 GALLONS OF PREMIUM ULTRA LOW SULFUR #2 DIESEL FUEL FOR SCHOOL BUSES.			
97190063				7000	EACH	\$ 2.32 #2 DIESEL FUEL FOR SCHOOL BUSES.	6486	\$	16,240.00
97190063				7000	EACH	\$ 0.00 FED. OIL SPILL FEE	6486	\$	14.98
97190063				7000	EACH	\$ 0.00 MO AGI TAX PER GAL EXTRA	6486	\$	7.00
97190063				7000	EACH	\$ 0.17 MO STATE TAX PER GAL	6486	\$	1,190.00
97190063				7000	EACH	\$ 0.00 MO ADG INSP FEE TAX PER GAL	6486	\$	4.90
97190063				7000	EACH	\$ 0.00 MO USTD TRANSP. LOAD FEE TAX PER GAL	6486	\$	17.50
97190066	10/02/18	615999	FROESEL OIL CO, INC	500					
97190066						PREMIUM, ULTRA LOW SULFUR, #2 DIESEL FUEL. BID #19P-39			
97190066				8000	EACH	\$ 2.35 BID #19P-39	6486	\$	18,792.00
97190066				8000	EACH	\$ 0.00 FED OIL SPILL FEE	6486	\$	17.12
97190066				8000	EACH	\$ 0.00 MO AGI TAX PER GAL. EXTRA	6486	\$	8.00
97190066				8000	EACH	\$ 0.17 MO STATE TAX PER GAL	6486	\$	1,360.00
97190066				8000	EACH	\$ 0.00 MO ADG INSP FEE TAX PER GAL	6486	\$	5.60
97190066				8000	EACH	\$ 0.00 MO USTD TRANSP. LOAD FEE TAX PER GAL	6486	\$	20.00
97190070	10/10/18	800559	KIESEL COMPANY	500					

97190070						7350	EACH	\$	2.50	PREMIUM ULTRA LOW SULFUR, #2 DIESEL FUEL FOR SCHOOL BUSES. BID #19P-41			
97190070											6486	\$	18,367.65
97190070						7350	EACH	\$	0.00	FED OIL SPILL FEE			
97190070											6486	\$	15.73
97190070						7350	EACH	\$	0.00	MO. AGI TAX PER GALLON EXTRA			
97190070											6486	\$	7.35
97190070						7350	EACH	\$	-	FED SUPER FUND TAX PER GALLON EXTRA			
97190070											6486	\$	-
97190070						7350	EACH	\$	0.17	MO STATE TAX PER GALLON			
97190070											6486	\$	1,249.50
97190070						7350	EACH	\$	0.00	MO. ADG INSP. FEE TAX PER GALLON			
97190070											6486	\$	5.15
97190070						7350	EACH	\$	0.00	MO USTD TRANSP. LOAD FEE TAX PER GALLON			
97190070											6486	\$	18.38
97190073	10/22/18	800559	KIESEL COMPANY		500								
97190073						7350	EACH	\$	2.48	PREMIUM ULTRA LOW SULFUR, #2 DIESEL FUEL FOR SCHOOL BUSES, BID #19P-45			
97190073											6486	\$	18,228.00
97190073						7350	EACH	\$	0.00	FED OIL SPILL FEE			
97190073											6486	\$	15.73
97190073						7350	EACH	\$	0.00	MO AGI TAX PER GAL EXTRA			
97190073											6486	\$	7.35
97190073						7350	EACH	\$	-	FED SUPER FUND TAX PER GAL EXTRA			
97190073											6486	\$	-
97190073						7350	EACH	\$	0.17	MO STATE TAX PER GAL			
97190073											6486	\$	1,249.50
97190073						7350	EACH	\$	0.00	MO ADG INSP FEE TAX PER GAL			
97190073											6486	\$	5.15
97190073						7350	EACH	\$	0.00	MO USTD TRANSP LOAD FEE TAX PER GAL			
97190073											6486	\$	18.38
97190081	11/01/18	800559	KIESEL COMPANY		500								
97190081						7350	EACH	\$	2.34	PREMIUM ULTRA LOW SULFUR, #2 DIESEL FUEL FOR SCHOOL BUSES, BID #19P-52			
97190081											6486	\$	17,191.65
97190081						7350	EACH	\$	0.00	FED OIL SPILL FEE			
97190081											6486	\$	15.73
97190081						7350	EACH	\$	0.00	MO AGI TAX PER GAL EXTRA			
97190081											6486	\$	7.35
97190081						7350	EACH	\$	-	FED SUPER FUND TAX PER GAL EXTRA			
97190081											6486	\$	-
97190081						7350	EACH	\$	0.17	MO STATE TAX PER GAL			
97190081											6486	\$	1,249.50
97190081						7350	EACH	\$	0.00	MO ADG INSP FEE TAX PER GAL			
97190081											6486	\$	5.15
97190081						7350	EACH	\$	0.00	MO USTD TRANSP LOAD FEE TAX PER GAL			
97190081											6486	\$	18.38

97190086	11/20/18	642477	ENERGY PETROLEUM COMPANY	500							
97190086				7500	EACH	\$	2.31	PREMIUM ULTRA LOW SULFUR, #2 DIESEL FOR SCHOOL BUSES, BID #19P-55			
97190086									6486	\$	17,325.00
97190086				7500	EACH	\$	0.00	FED OIL SPILL FEE			
97190086									6486	\$	16.05
97190086				7500	EACH	\$	0.00	MO AGI TAX PER GAL EXTRA			
97190086									6486	\$	7.50
97190086				7500	EACH	\$	0.17	MO STATE TAX PER GAL			
97190086									6486	\$	1,275.00
97190086				7500	EACH	\$	0.00	MO ADG INSP. FEE TAX PER GAL			
97190086									6486	\$	5.25
97190086				7500	EACH	\$	0.00	MO USTD TRANSP LOAD FEE TAX PER GAL			
97190086									6486	\$	18.75
97190091	11/26/18	642477	ENERGY PETROLEUM COMPANY	500							
97190091				7500	EACH	\$	2.17	7500 GALLONS OF FUEL FOR SCHOOL BUSES. BID #19P-59			
97190091									6486	\$	16,261.50
97190091				7500	EACH	\$	0.00	FED. OIL SPILL FEE			
97190091									6486	\$	16.05
97190091				7500	EACH	\$	0.00	MO. AGI TAX PER GALLON EXTRA			
97190091									6486	\$	7.50
97190091				7500	EACH	\$	-	FED SUPER FUND TAX PER GALLON EXTRA			
97190091									6486	\$	-
97190091				7500	EACH	\$	0.17	MO. STATE TAX PER GALLON			
97190091									6486	\$	1,275.00
97190091				7500	EACH	\$	0.00	MO. ADG INSP. FEE TAX PER GALLON			
97190091									6486	\$	5.25
97190091				7500	EACH	\$	0.00	MO. USTD TRANSP. LOAD FEE TAX PER GALLON			
97190091									6486	\$	18.75
97190098	12/10/18	642477	ENERGY PETROLEUM COMPANY	500							
97190098				7500	EACH	\$	1.87	DIESEL FUEL FOR SCHOOL BUSES BID #19P-66			
97190098									6486	\$	14,025.00
97190098				7500	EACH	\$	0.00	FED OIL SPILL FEE			
97190098									6486	\$	16.05
97190098				7500	EACH	\$	0.00	MO AGI TAX PER GAL EXTRA			
97190098									6486	\$	7.50
97190098				7500	EACH	\$	0.17	MO STATE TAX PER GAL			
97190098									6486	\$	1,275.00
97190098				7500	EACH	\$	0.00	MO ADG INSP FEE TAX PER GAL			
97190098									6486	\$	5.25
97190098				7500	EACH	\$	0.00	MO USTD TRANSP. LOAD FEE TAX PER GAL			
97190098									6486	\$	18.75

97190100	12/14/18	800559	KIESEL COMPANY	500								
97190100					7300	EACH	\$	1.74	PREMIUM, ULTRA LOW SULFUR, #2 DIESEL FUEL FOR SCHOOL BUSES.			
97190100										6486	\$	12,698.35
97190100					7300	EACH	\$	0.00	FED OIL SPILL FEE			
97190100										6486	\$	15.62
97190100					7300	EACH	\$	0.00	MO AGI TAX PER GAL EXTRA			
97190100										6486	\$	7.30
97190100					7300	EACH	\$	0.17	MO STATE TAX PER GALLON			
97190100										6486	\$	1,241.00
97190100					7300	EACH	\$	0.00	MO ADG INSP FEE TAX PER GALLON			
97190100										6486	\$	5.11
97190100					7300	EACH	\$	0.00	MO USTD TRANSP LOAD FEE TAX PER GALLON			
97190100										6486	\$	18.25
			ENERGY PETROLEUM									
			COMPANY	500								
97190104	01/16/19	642477			7500	EACH	\$	1.50	PREMIUM, ULTRA LOW SULFUR #2 DIESEL			
97190104										6486	\$	11,212.50
97190104					7500	EACH	\$	0.00	FED OIL SPILL FEE			
97190104										6486	\$	16.05
97190104					7500	EACH	\$	0.00	MO AGI TAX PER GAL EXTRA			
97190104										6486	\$	7.50
97190104					7500	EACH	\$	0.17	MO STATE TAX PER GAL			
97190104										6486	\$	1,275.00
97190104					7500	EACH	\$	0.00	MO ADG INSP FEE TAX PER GAL			
97190104										6486	\$	5.25
97190104					7500	EACH	\$	0.00	MO USTD TRANSP LOAD FEE TAX PER GAL			
97190104										6486	\$	18.75
97190122	02/01/2019	626035	HOME SERVICE OIL CO INC	500								
97190122					7600	EACH	\$	1.68	PREMIUM ULTRA LOW SULFUR #2 DIESEL			
97190122										6486	\$	12,745.20
97190122					7600	EACH	\$	0.00	FED. OIL SPILL FEE			
97190122										6486	\$	16.26
97190122					7600	EACH	\$	0.00	MO.AGI TAX PER GAL. EXTRA			
97190122										6486	\$	7.60
97190122					7600	EACH	\$	0.17	MO.STATE TAX PER GAL.			
97190122										6486	\$	1,292.00
97190122					7600	EACH	\$	0.00	MO.ADG INSP. FEE TAX PER GAL.			
97190122										6486	\$	5.32
97190122					7600	EACH	\$	0.00	MO.USTD TRANSP. LOAD FEE TAX PER GAL.			
97190122										6486	\$	19.00
97190124	02/08/2019	626035	HOME SERVICE OIL CO INC	500								
97190124					7600	EACH	\$	1.83	PREMIUM ULTRA LOW SULFER #2 DIESEL FUEL TREATED			
97190124										6486	\$	13,927.00
97190124					7600	EACH	\$	0.00	FED. OIL SPILL FEE			
97190124										6486	\$	16.26

97190133					7500	EACH	0.00250 MO USTD TRANSP LOAD FE TAX PER GAL			
97190133								6486	\$	18.75
97190139	03/14/2019	642477	ENERGY PETROLEUM COMPAN	500						
97190139					7500	EACH	2.12000 PREMIUM ULTRA LOW SULFUR #2 DIESEL FUEL TREA	6486	\$	15,900.00
97190139					7500	EACH	0.00214 FED OIL SPILL FEE	6486	\$	16.05
97190139					7500	EACH	0.00100 MO AGI TAX PER GAL EXTRA	6486	\$	7.50
97190139					7500	EACH	0.17000 MO STATE TAX PER GAL	6486	\$	1,275.00
97190139					7500	EACH	0.00070 MO ADG INSP. FEE TAX PER GAL	6486	\$	5.25
97190139										
97190139					7500	EACH	0.00250 MO USTD TRANSP LOAD FEE TAX PER GAL	6486	\$	18.75
97190142	03/27/2019	642477	ENERGY PETROLEUM COMPAN	500						
97190142					7500	EACH	2.09000 PREMIUM, ULTRA LOW SULFUR, #2 DIESEL FUEL TRE	6486	\$	15,675.00
97190142										
97190142					7500	EACH	0.00214 FED OIL SPILL FEE	6486	\$	16.05
97190142										
97190142					7500	EACH	0.00100 MO AGI TAX PER GAL EXTRA	6486	\$	7.50
97190142										
97190142					7500	EACH	0.17000 MO STATE TAX PER GAL	6486	\$	1,275.00
97190142					7500	EACH	0.00070 MO ADG INSP FEE TAX PER GAL	6486	\$	5.25
97190142					7500	EACH	0.00250 MO USTD TRANSP LOAD FEE TAX PER GAL	6486	\$	18.75
97190152	04/09/2019	642477	ENERGY PETROLEUM COMPAN	500						
97190152					7500	EACH	2.06000 PREMIUM ULTRA LOW SULFUR #2 DIESEL FUEL			
97190152								6486	\$	15,450.00
97190152					7500	EACH	0.00214 FED OIL SPILL FEE			
97190152								6486	\$	16.05
97190152					7500	EACH	0.17000 MO STATE TAX PER GAL			
97190152								6486	\$	1,275.00
97190152					7500	EACH	0.00070 MO ADG INSP FEE TAX PER GAL			
97190152								6486	\$	5.25
97190152					7500	EACH	0.00250 MO USTD TRANSP LOAD FEE TAX PER GAL			
97190152								6486	\$	18.75
97190162	04/17/2019	626035	HOME SERVICE OIL CO INC	500						
97190162					7500	EACH	2.11000 PREMIUM ULTRA LOW SULFUR DIESEL FUEL			
97190162								6486	\$	15,825.00
97190162					7500	EACH	0.00214 FED OIL SPILL FEE			
97190162								6486	\$	16.05
97190162					7500	EACH	0.00100 MO AGI TAX PER GAL EXTRA			
97190162								6486	\$	7.50
97190162					7500	EACH	0.17000 MO STATE TAX PER GAL			
97190162								6486	\$	1,275.00
97190162					7500	EACH	0.00070 MO ADG INSP FEE TAX PER GAL			
97190162								6486	\$	5.25
97190162					7500	EACH	0.00250 MO USTD TRANSP LOAD FEE TAX PER GAL			
97190162								6486	\$	18.75
85190167	08/09/18	851946	NEW SYSTEM CARPET	401						

85190167					400	EACH	\$	17.50	TRASH CAN LINERS 40" X 48" - 16 MICRON HIGH DENSITY ONLY - CLEAR - START SEALED (250/CS) APPROX CASE WGT 21.6# INTERPLAST/PITT #MR20283 MC	6411	\$	7,000.00
85190168	08/09/18	914674	UNIPAK CORP.	401								
85190168					100	EACH	\$	15.40	TRASH CAN LINERS 24" X 23" - 0.4 MIL LINEAR LOW DENSITY ONLY - CLEAR - STAR SEALED 1000/CS - APPROX CASE WGT 14.72# UPS #24R	6411	\$	1,540.00
85190176	08/17/18	800066	INDUSTRIAL SOAP CO	401								
85190176					400	EACH	\$	17.75	TRASH CAN LINERS 40" x 48" - 16 MICRON HIGH DENSITY ONLY - CLEAR - STAR SEALED (250/CS) APPROX CASE WGT 21.6# PITT #MR40483MC	6411	\$	7,100.00
85190232	09/25/18	914674	UNIPAK CORP.	401								
85190232					800	EACH	\$	9.59	TRASH CAN LINERS 33" X 39" - 1.3 MIL - LINEAR LOW DENSITY ONLY CLEAR - STAR SEALED - 100/CASE APPROX CASE WT: 11# PER CASE	6411	\$	7,672.00
85190258	10/31/18	914674	UNIPAK CORP.	401								
85190258					1000	EACH	\$	7.18	TRASH LINERS 40" X 48" - 16 MICRON HIGH DENSITY ONLY CLEAR - STAR SEALED - (100/CASE) APPROX 20# / CASE UPC #40483	6411	\$	7,180.00
85190320	02/06/2019	800066	INDUSTRIAL SOAP CO	401								
85190320					400	EACH	\$	18.00	TRASH CAN LINERS 40" X 48" - 16 MICRON HIGH DENSITY ONLY - CLEAR STAR SEALED 250 BAGS/ CASE APPROX WGT 20# PER CASE #MR40483MC	6411	\$	7,200.00
85190395	04/11/2019	914674	UNIPAK CORP.	401								
85190395					300	EACH		17.90000	TRASH CAN LINERS 40" X 48" - 16 MICRON HIGH DEN	6411	\$	5,370.00
85190395					800	EACH		9.88000	TRASH CAN LINERS 33" X 39" - 1.3 MIL LINEAR LOW I	6411	\$	7,904.00
85190395					100	EACH		15.25000	TRASH CAN LINERS 24" X 23" - 0.4 MILINESR LOW D	6411	\$	1,525.00
85190395												
81190034	08/08/18	840018	LIBERTY FRUIT COMPANY, INC.	700								
81190034					1	EACH	\$	20,000.00	BLANKET PO	6471	\$	20,000.00
81190044	11/19/18	913529	VACCARO & SONS PRODUCE	700								
81190044					1	EACH	\$	29,295.00	BLANKET PO	6471	\$	29,295.00
81190047	02/05/2019	913529	VACCARO & SONS PRODUCE	700								
81190047					1	EACH	\$	40,000.00	BLANKET PO	6471	\$	40,000.00

Total Commodity 202 (Paper)	\$	187,577.20
Total Commodity 400 (Fuel - Facilities)	\$	92,694.62
Total Commodity 500 (Fuel - Transportation)	\$	338,243.02
Total Commodity 401 (Trash Liners)	\$	52,491.00
Total Commodity 700 (Produce)	\$	89,295.00
Grand Total All Commodity	\$	760,300.84